

MC-106USB

WLAN USB Adapter

user's manual



MODECOM

MC-106USB

WLAN USB Adapter

Welcome	3
Package Contents	3
Wireless USB Adapter Overview	3
Interface	4
LED Description	4
Wireless USB Adapter Installation	4
Windows Vista	4
Windows XP	7
Windows 2000	10
Windows Me	13
Windows 98SE	16
Making a Basic Wireless Network Connection	19
Infrastructure mode	19
Introduction to the Wireless LAN Utility	22
General	23
Profile	24
Available Network	25
Advanced	26
Status	27
Statistics	27
Wi-Fi Protected Setup (WPS)	28
Push Button Config (PBC) Method	28
PIN Method 1	30
PIN Method 2	32
Uninstall	34
Troubleshooting	35
Environment protection:	36

Welcome

Thank you for purchasing the IEEE 802.11g Wireless USB Adapter. Wireless USB Adapter has an extra foundation which is designed to make Wireless USB Adapter get better signal when it is plugging into the foundation and can be easily move around. In addition, Wireless USB Adapter is backward compatible with 802.11b. When Wireless USB Adapter is connecting to the standard 802.11b or 802.11g APs or routers, it can perform much better than other standard stations.

Wireless USB Adapter supports higher data throughput than the IEEE802.11g standard (up to 54Mbps).

For the security of WLAN, Wireless USB Adapter supports 64/128-bit WEP data encryption which protects your wireless network from eavesdropping.

It also supports WPA/WPA2 which combines IEEE802.1x and TKIP technologies. Client users are required to authorize before accessing to APs or routers, and the data transmitted on the network is encrypted and decrypted by a dynamically changed secret key. Wireless USB Adapter supports WPA2 function which provides a stronger encryption through AES which is the most advanced WLAN solution for IEEE802.11i. Besides, Wireless USB Adapter supports WPS function which provides a stronger encryption and easier configuration through WPA2 which is the most advanced WLAN solution for IEEE802.11i.

Package Contents

The Wireless USB Adapter package includes the following (note that your particular hardware and cables may look slightly different than shown below).



Quick Installation Guide



AUTORUN CD



Wireless USB Adapter

Wireless USB Adapter Overview

Wireless USB Adapter has the USB interface and LED below.



Interface

USB Interface: Connect the USB Interface to a USB port on your computer.

LED Description

LED: The LED stays lighted to indicate WLAN link established and active.

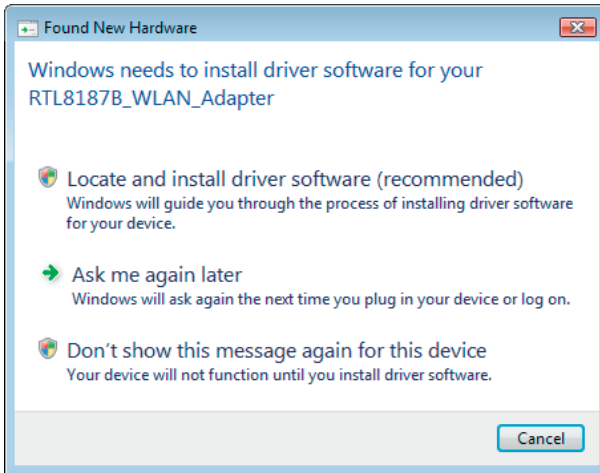
Wireless USB Adapter Installation

The following instructions will guide you to through the process of installing the Wireless USB Adapter.

Windows Vista

Step 1:

As Windows starts it will detect that new hardware has been added, and start the " Found New Hardware Wizard ". Click on " Cancel ".



Step 2:

Please insert the AUTORUN CD into your CD-ROM drive.

The CD should auto-start, displaying the following window. If it does not start, click on Start – Run and type in CD: \autorun.exe (where CD is the drive letter of your CD-ROM drive.) Click " Driver Installation ".

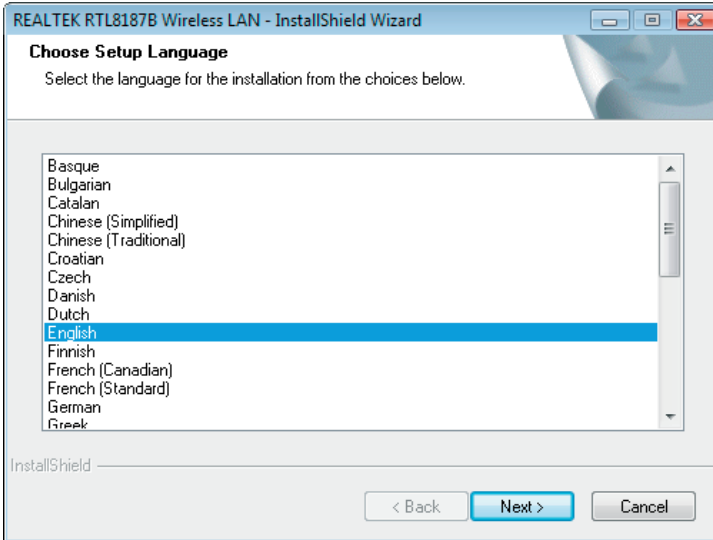


Step 3:

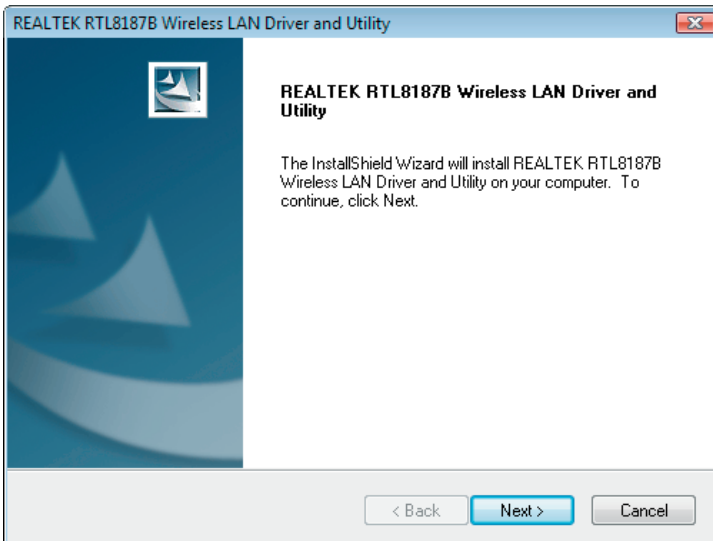
For Security reasons VISTA requires the installer program to have administrator privileges so the new policy called " User Account Control " has been introduced in Windows VISTA. If UAC is enabled Windows pops up a window " User Account Control " Windows need your permission to continue. User needs to Click " Continue " to proceed with the installation.

Step 4:

Click " Next ".

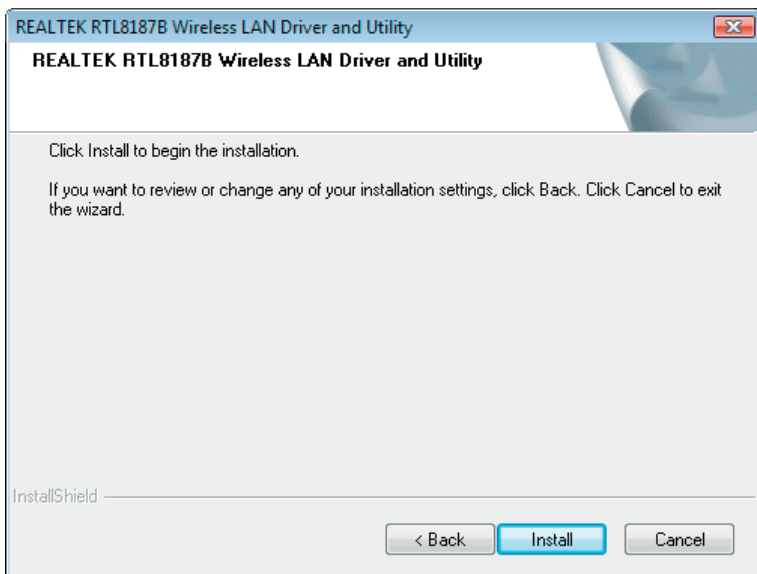
**Step 5:**

Click " Next ".



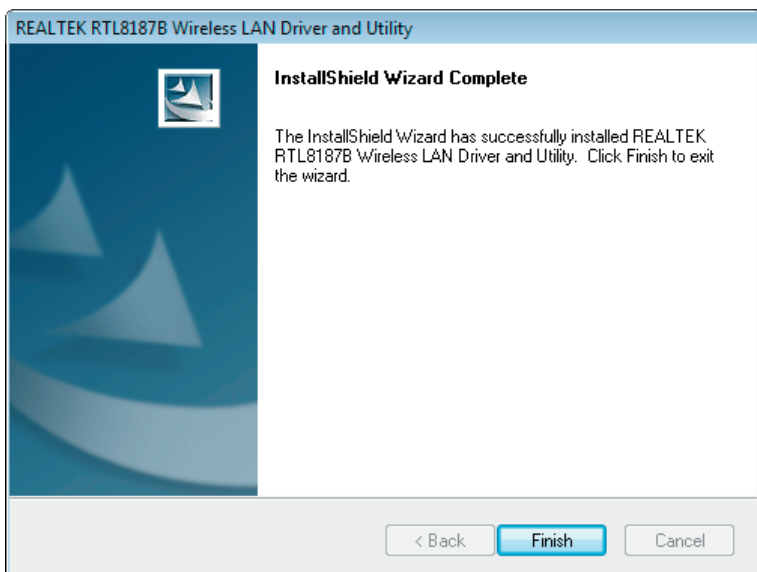
Step 6:

Click "Install".



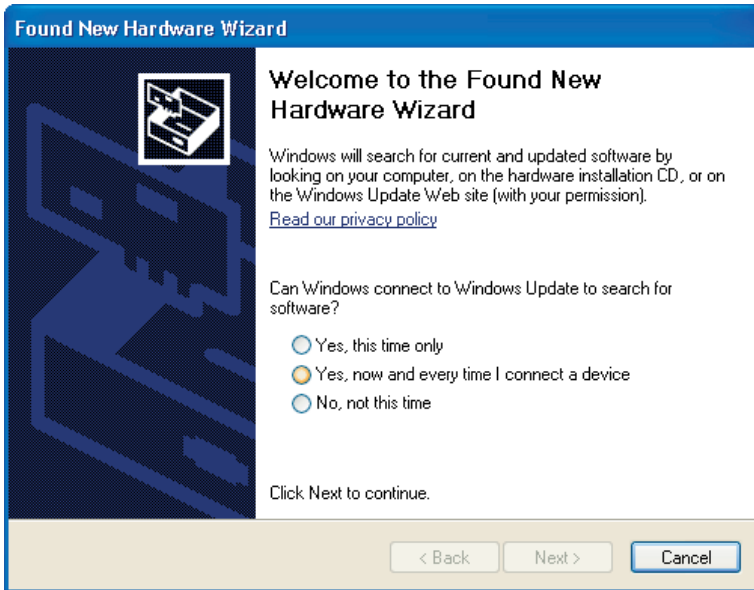
Step 7:

Click "Finish".



Windows XP**Step 1:**

As Windows starts it will detect that new hardware has been added, and start the " Found New Hardware Wizard ". Click on " Cancel".

**Step 2:**

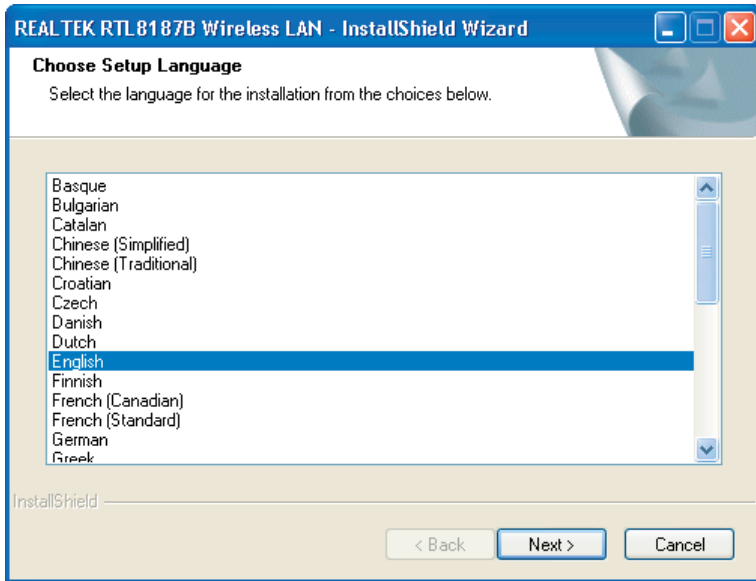
Please insert the AUTORUN CD into your CD-ROM drive.

The CD should auto-start, displaying the following window. If it does not start, click on Start – Run and type in CD: \autorun.exe (where CD is the drive letter of your CD-ROM drive.) Click " Driver Installation".



Step 3:

Click "Next".



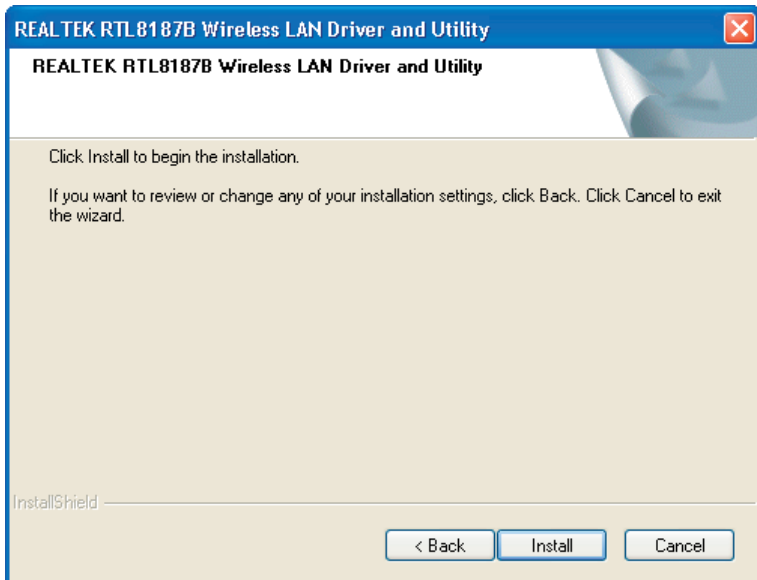
Step 4:

Click "Next".



Step 5:

Click "Install".

**Step 6:**

Click "Finish".



Windows 2000

Step 1:

As Windows starts it will detect that new hardware has been added, and start the " Found New Hardware Wizard ". Click on " Cancel".



Step 2:

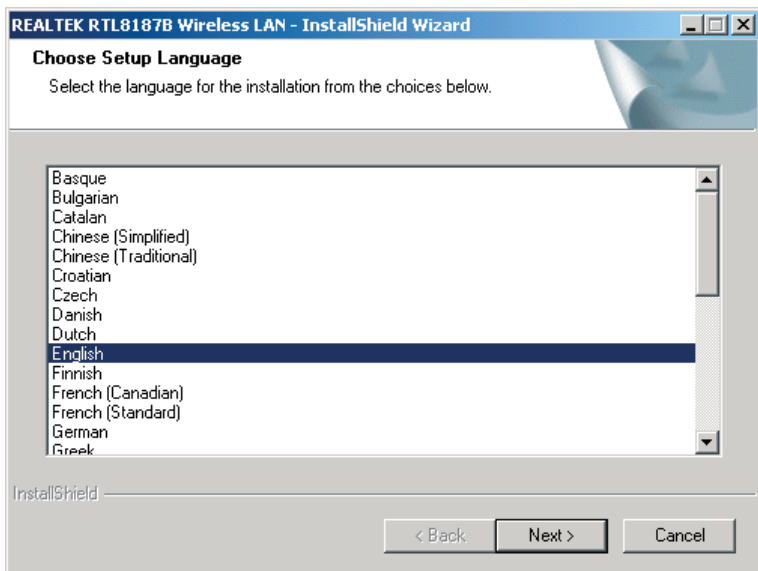
Please insert the AUTORUN CD into your CD-ROM drive.

The CD should auto-start, displaying the following window. If it does not start, click on Start – Run and type in CD: \ autorun.exe (where CD is the drive letter of your CD-ROM drive.) Click " Driver Installation".

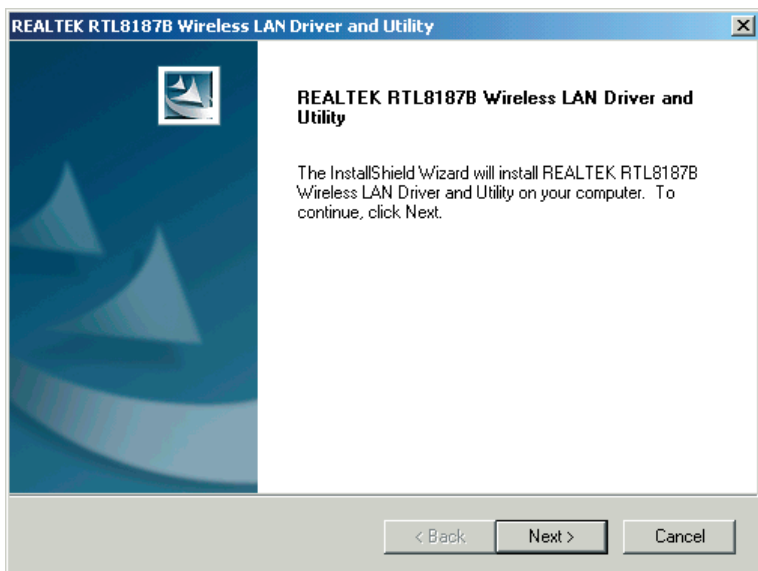


Step 3:

Click "Next".

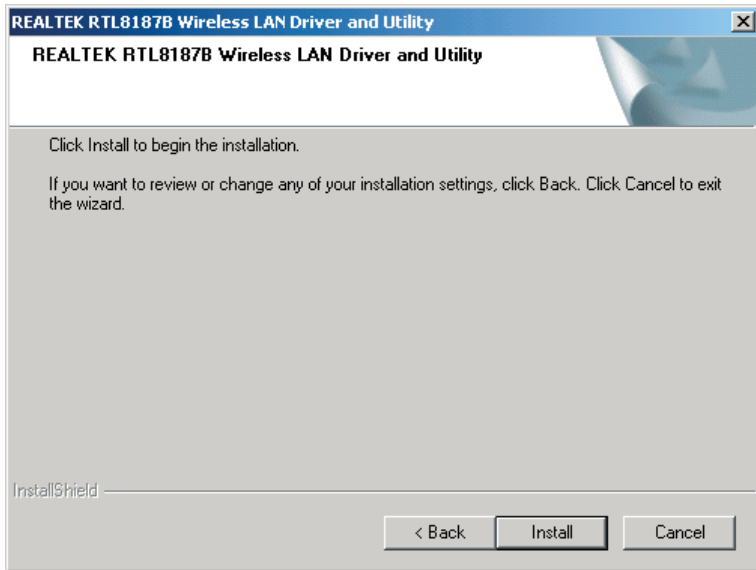
**Step 4:**

Click "Next".



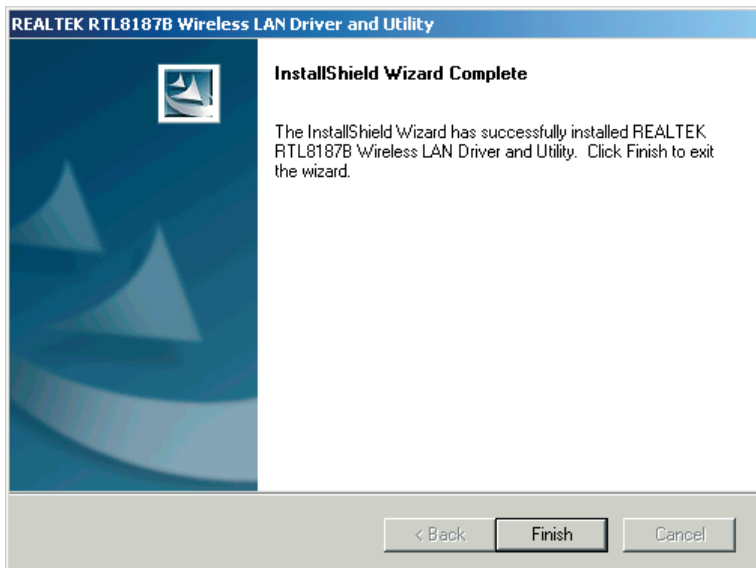
Step 5:

Click "Install".



Step 6:

Click "Finish".



Windows Me**Step 1:**

As Windows starts it will detect that new hardware has been added, and start the " Found New Hardware Wizard ". Click on " Cancel ".

**Step 2:**

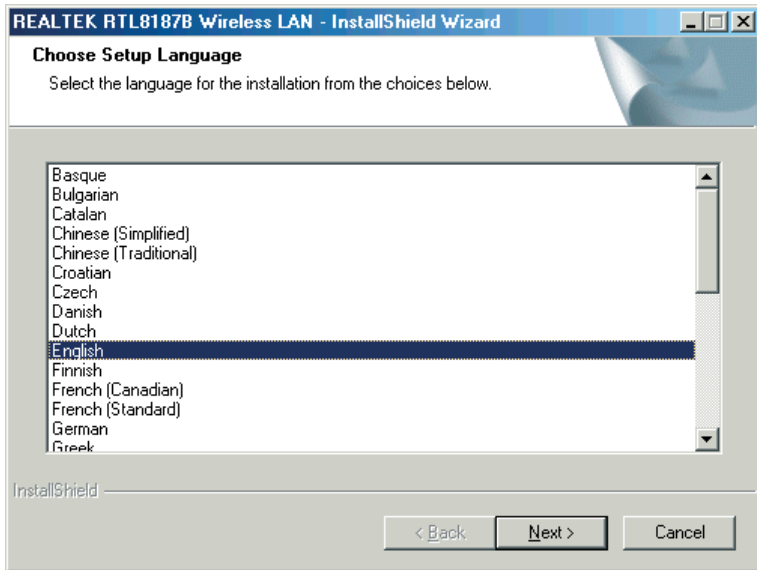
Please insert the AUTORUN CD into your CD-ROM drive.

The CD should auto-start, displaying the following window. If it does not start, click on Start – Run and type in CD: \ autorun.exe (where CD is the drive letter of your CD-ROM drive.) Click " Driver Installation ".



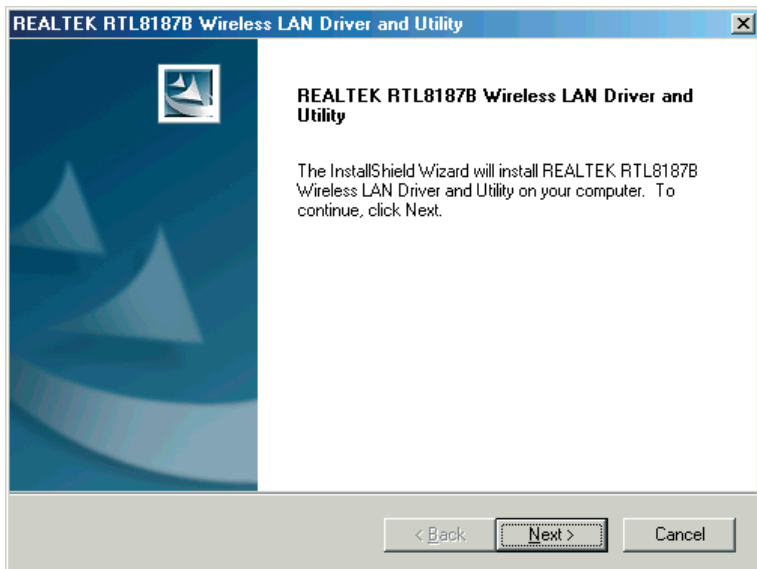
Step 3:

Click "Next".



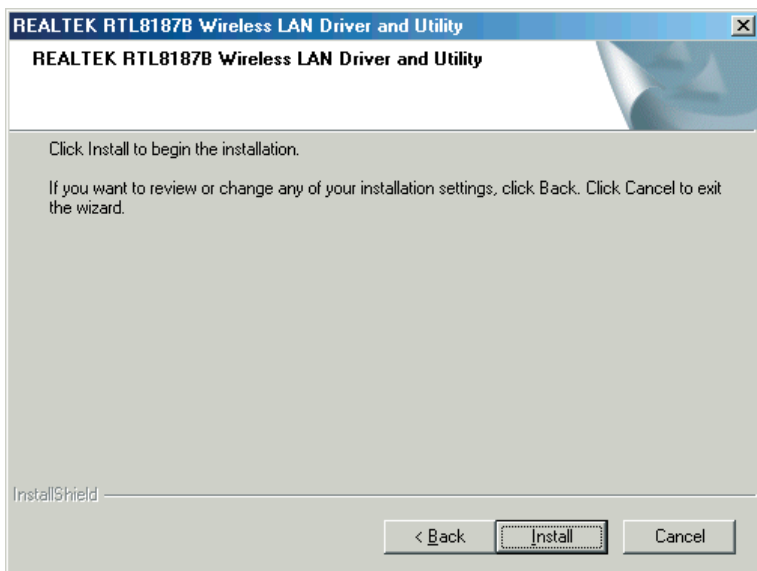
Step 4:

Click "Next".

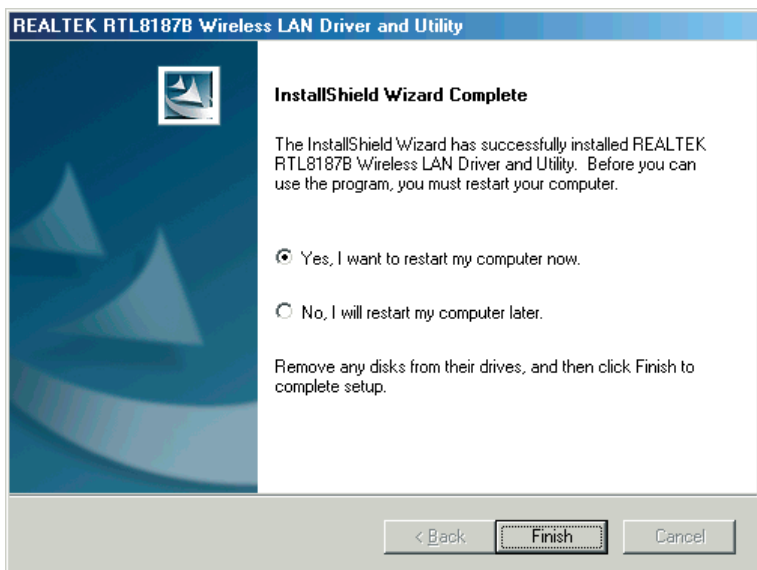


Step 5:

Click "Install".

**Step 6:**

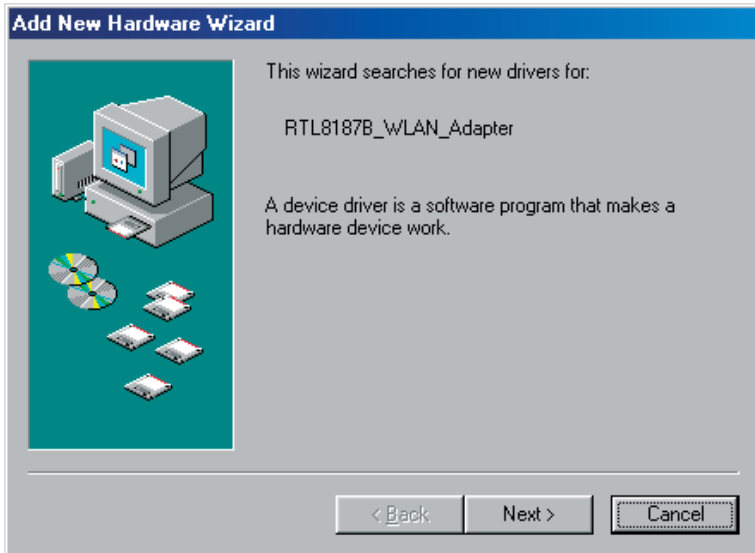
Click "Finish".



Windows 98SE

Step 1:

As Windows starts it will detect that new hardware has been added, and start the " Found New Hardware Wizard ". Click on " Cancel ".



Step 2:

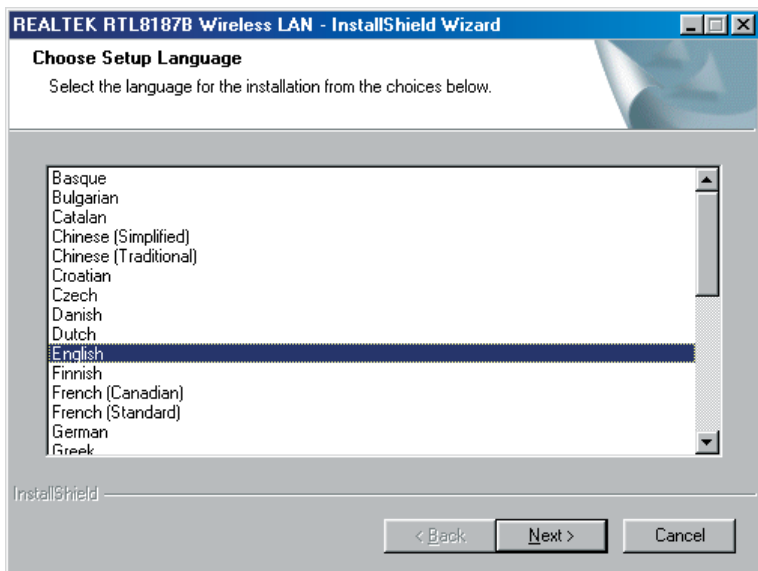
Please insert the AUTORUN CD into your CD-ROM drive.

The CD should auto-start, displaying the following window. If it does not start, click on Start – Run and type in CD: \ autorun.exe (where CD is the drive letter of your CD-ROM drive.) Click " Driver Installation ".

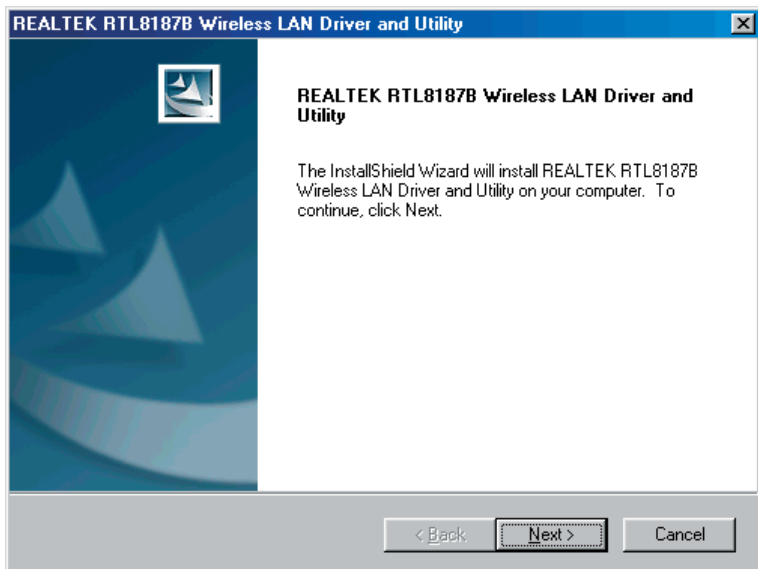


Step 3:

Click "Next".

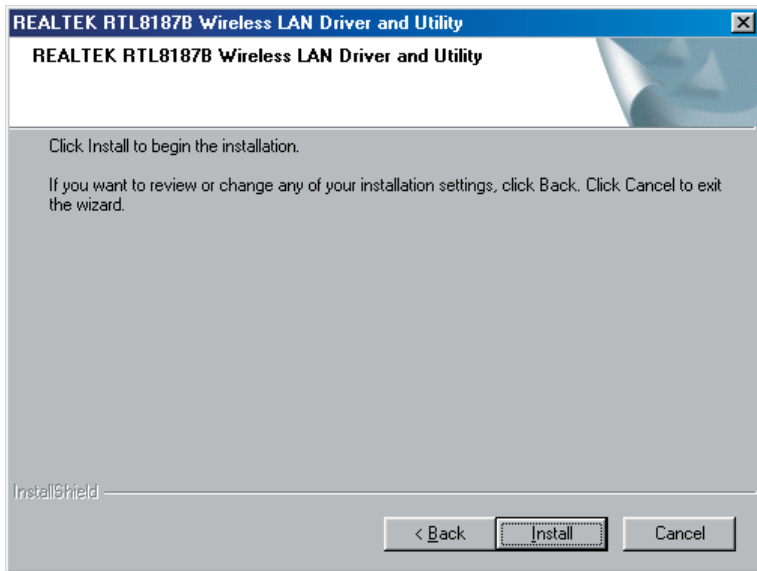
**Step 4:**

Click "Next".

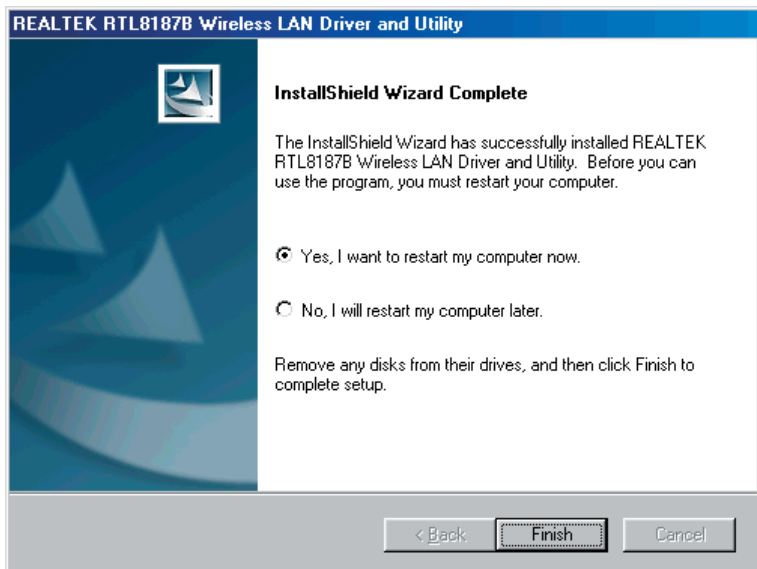


Step 5:

Click "Install".

**Step 6:**

Click "Finish".





Making a Basic Wireless Network Connection

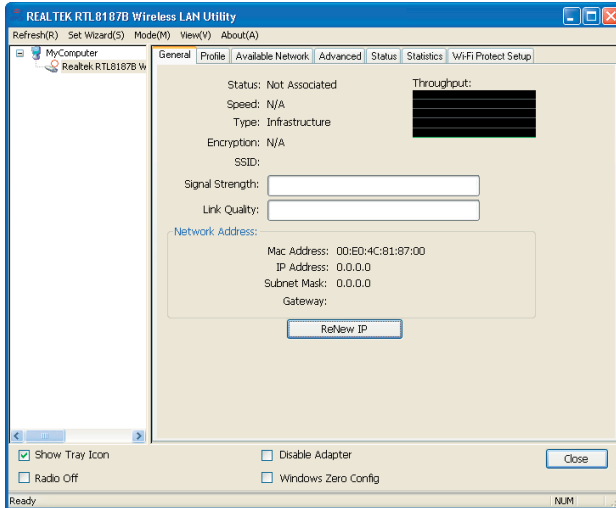
For Windows XP users, your native Windows XP wireless support (Wireless Zero Configuration Service) has been disabled by default.

Infrastructure mode

An Infrastructure Mode network contains at least one wireless client and one wireless AP or router. This client connects to Internet or intranet by communicating with this wireless AP or router.

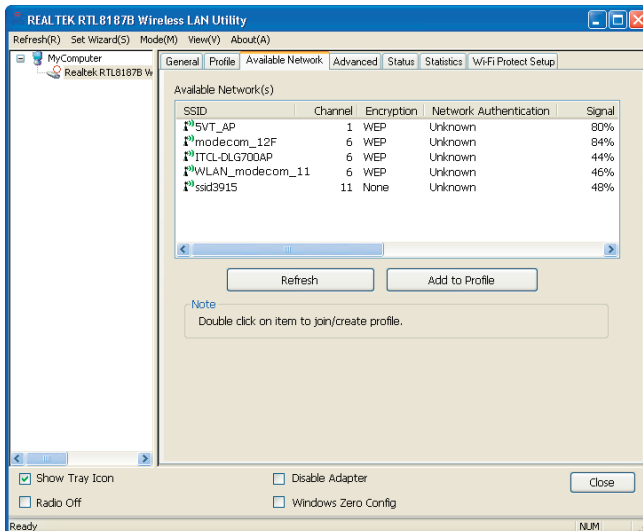
Step 1:

Double click the  icon on your desktop to start the utility or  in the task bar.



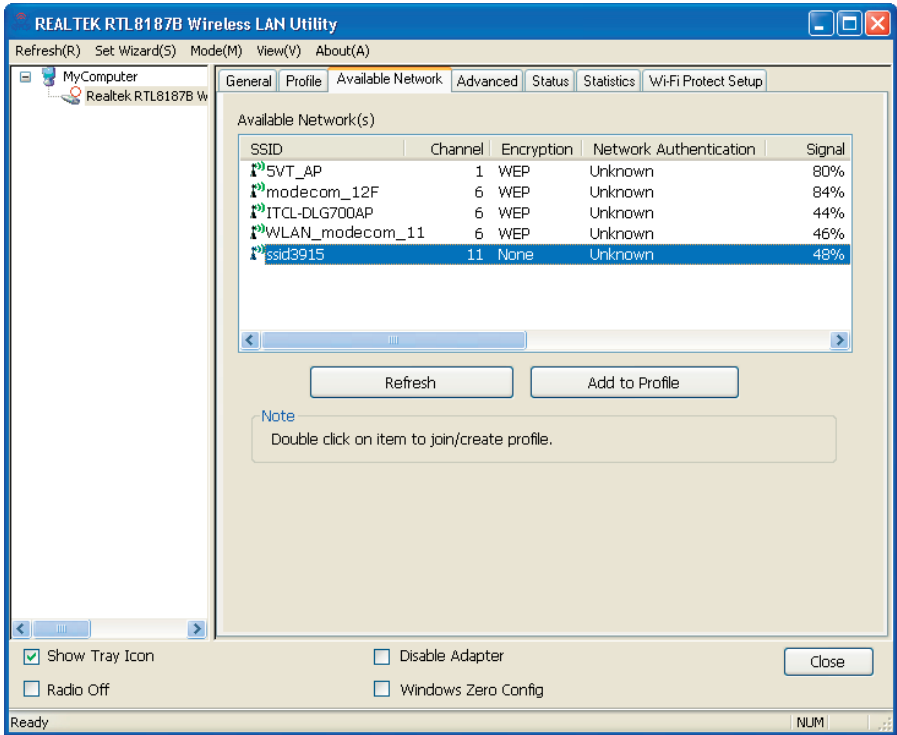
Step 2:

Click the "Available Network" button to scan available access points.



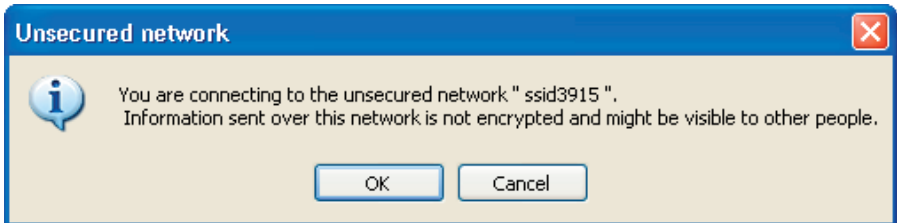
Step 3:

Double click on the SSID of AP that you are going to connect to and create profile that you are connecting to an open (Encryption is None) wireless network for example the SSID is ssid3915.



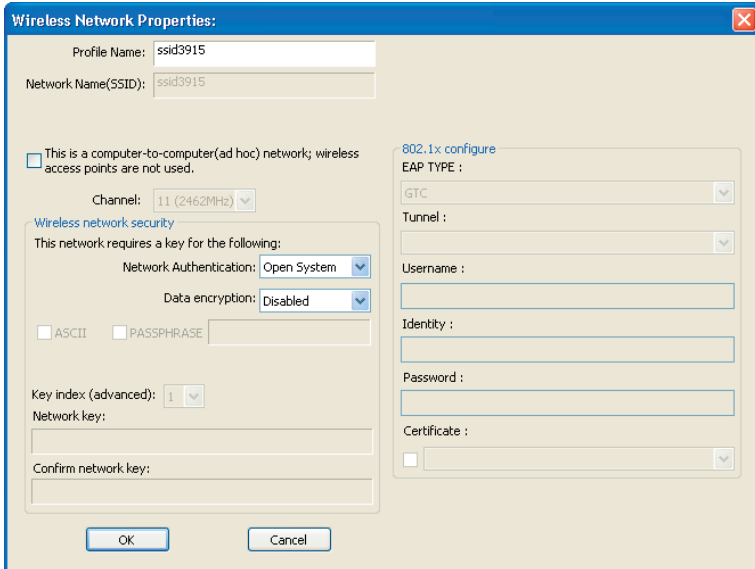
Step 4:

Click the "OK".

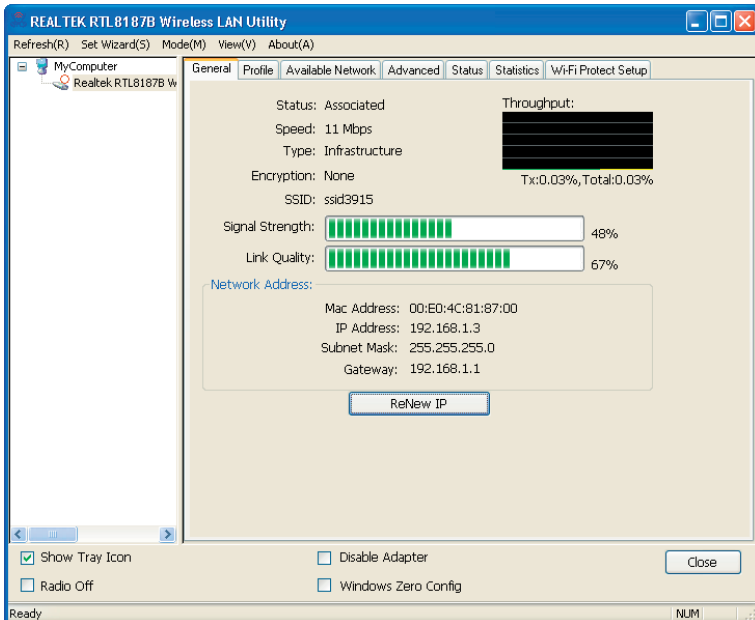


Step 5:

Click the "OK".

**Step 6:**

Now you are ready to use the Wireless Network to Internet or intranet.



Note: This example is an open wireless network. If you are going to connect to a Wireless adapter with security protection, you will have to configure the encryption settings in this profile to be corresponding to the other wireless adapter. Please click on the " Network Authentication " drop-down list to select an authentication method, and then select a " Data encryption " type. Fill in each required blanks and click " OK ".

Introduction to the Wireless LAN Utility

Note: This management instruction uses Windows XP as the presumed operation system. Some functions are not supported in Windows 98se or Windows ME.

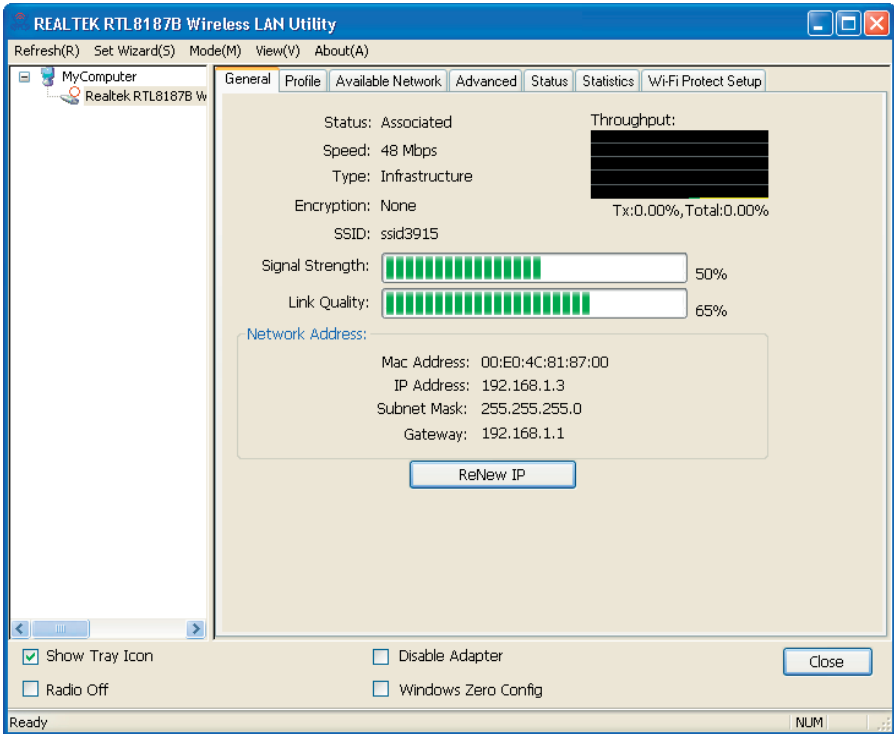
Starting the Wireless LAN Utility

<input checked="" type="checkbox"/> Show Tray Icon	<input type="checkbox"/> Disable Adapter
<input type="checkbox"/> Radio Off	<input type="checkbox"/> Windows Zero Config

Checkboxes	Functions
Show Tray Icon	To disable or enable to show the utility icon on your system tray, which is in the notification area at the lower-right corner of the windows desktop.
Radio Off	To disable or enable to prevent this adapter from transmitting or receiving signals.
Disable Adapter	To disable or enable the wireless adapter.
Windows Zero Config	To disable or enable to use the native Windows XP wireless support (Wireless Zero Configuration Service).

General

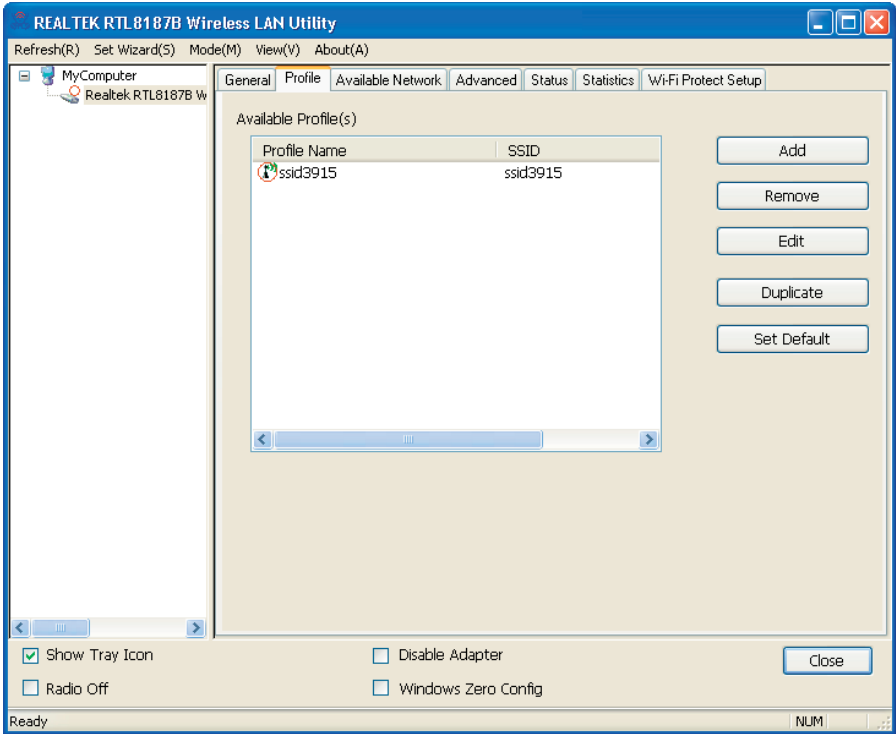
After starting the utility, the general page pops up. This General tab provides the information of your current wireless network connection. You may click the Renew IP button to refresh those listed information.



	Functions
Status	Check if the device associated to target network.
Speed	The current connection speed
Type	Infrastructure or Ad-Hoc mode.
Encryption	The encryption mode for connecting to current network profile.
SSID	The SSID (network name) of the connected wireless network.
Signal Strength	Indicates the signal strength.
Link Quality	Indicates the link quality.
Network Address	Shows the current IP addresses settings.

Profile

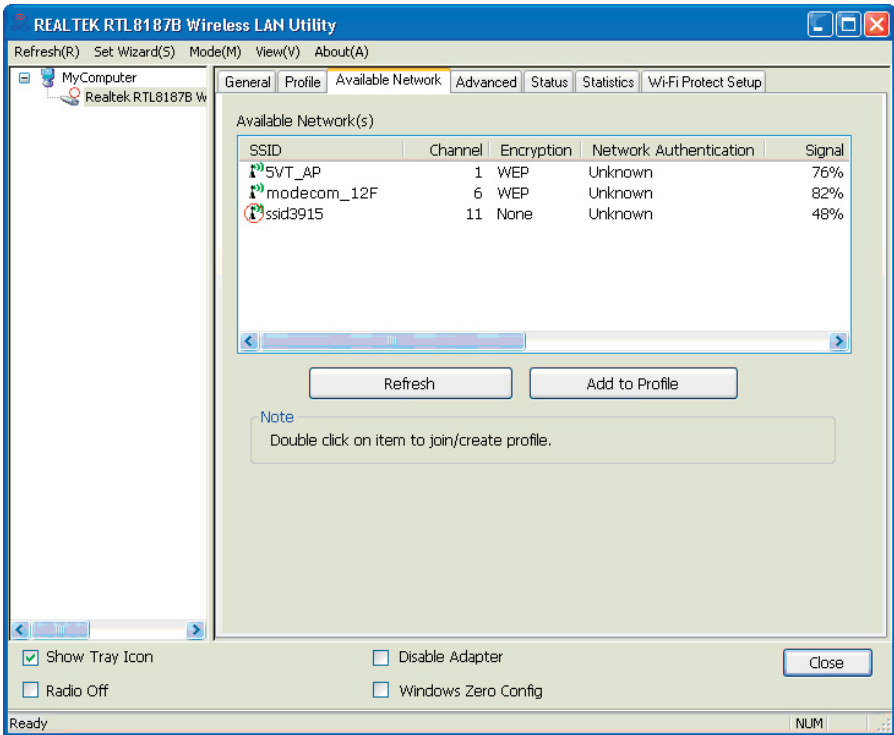
The Profile tab lists the preferred connections. You can click the buttons beside to do configure each connection.



	Functions
Add	To add a connection profile.
Remove	To remove a connection profile.
Edit	To modify the configurations for a profile.
Duplicate	To make a copy of a profile.
Set Default	To select a profile as your default wireless connection.

Available Network

This Available Network tab lists the reachable wireless network.

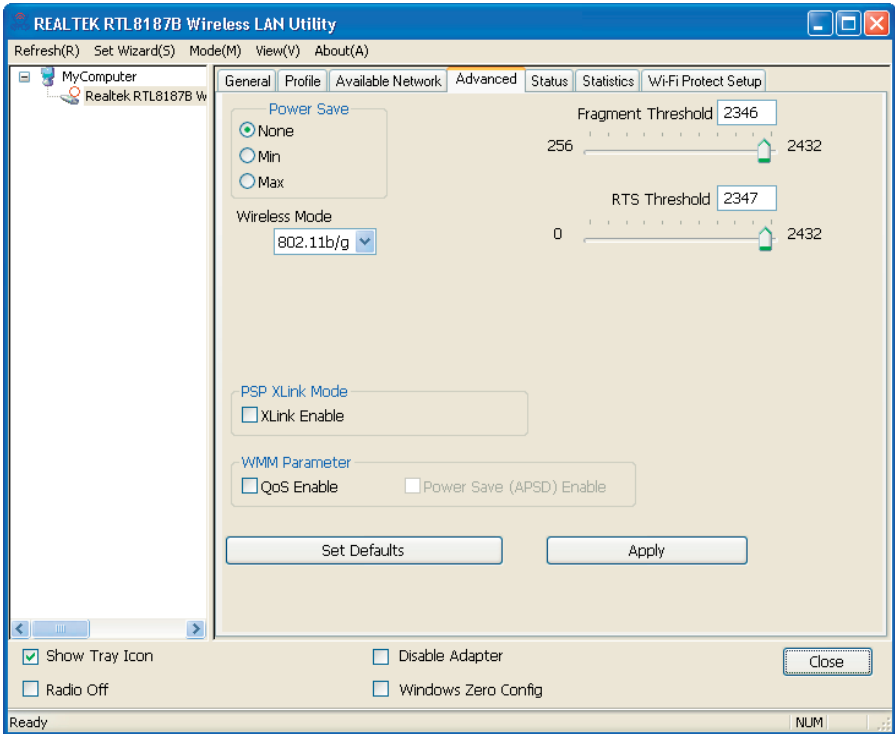


	Functions
Refresh	To rescan available Wireless Networks.
Add to Profile	To add an available Wireless Network to your profile list.

Advanced

This Advanced tab provides advanced configurations to this adapter. Every modification in this tab will be performed after clicking the Apply button.

To restore the default settings of the advanced tab, click the Set defaults button to perform restoring.

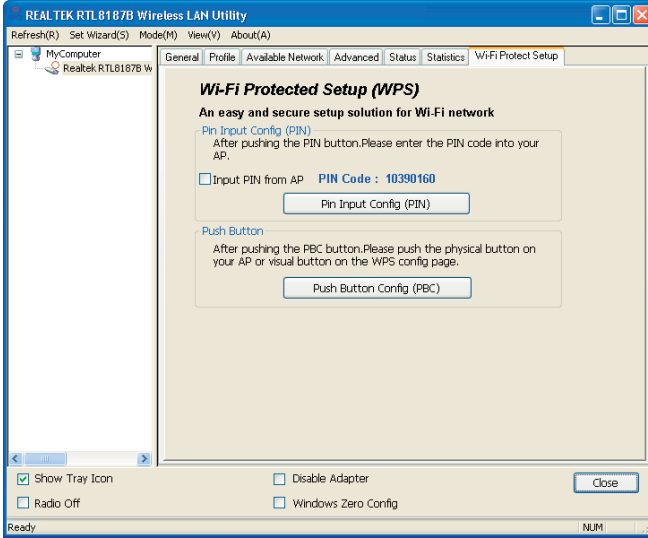


Power Save	Functions
None	Disable Power saving function.
Min	Minimum power consumption.
Max	Maximum power consumption.

	Functions
Fragment Threshold	The maximum size of a packet that is going to be segmented and transmitted.
RTS Threshold	Select the RTS Threshold form 0 to 2432.
Wireless Mode	802.11b/g : Connect to a 802.11b/g network (2.4GHz/54Mbps). 802.11b : Connect to a 802.11b network (2.4GHz/11Mbps).
PSP XLink Mode	If you are using the PS2 or X-box for wireless connection.
WMM Parameter	Quality of Service for better streaming bandwidth control.

Wi-Fi Protected Setup (WPS)



An easy and secure setup solution for Wi-Fi network.

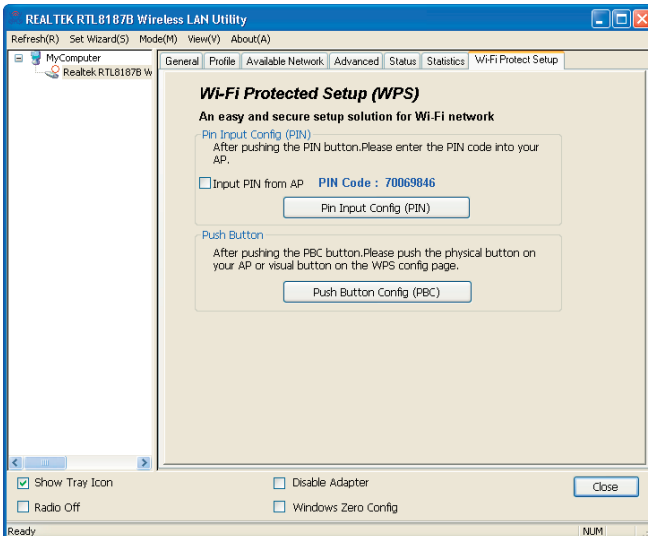


Push Button Config (PBC) Method

If both AP and users' Wireless LAN Utility has the physical button or visual button of Push Button Config (PBC), please follow steps below to complete the WPS.

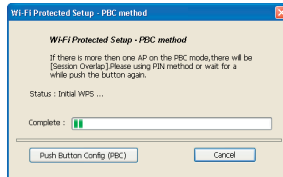
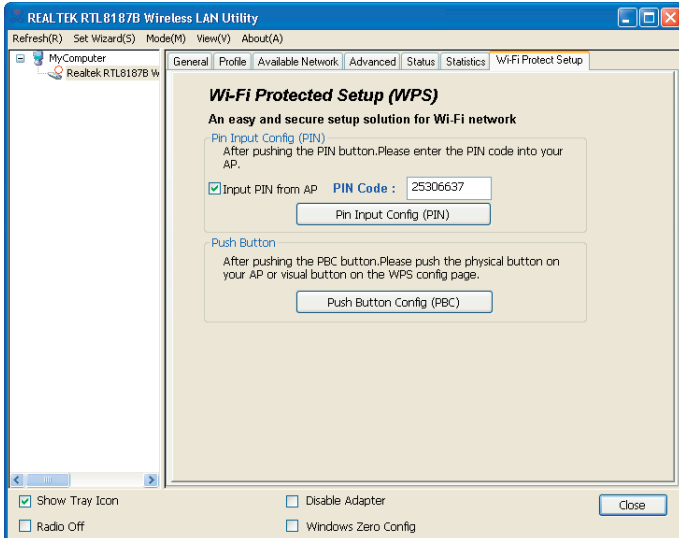
Step 1:

Double click the  icon on your desktop to start the utility or  in the task bar and then click the " Wi-Fi Protected Setup " tab.



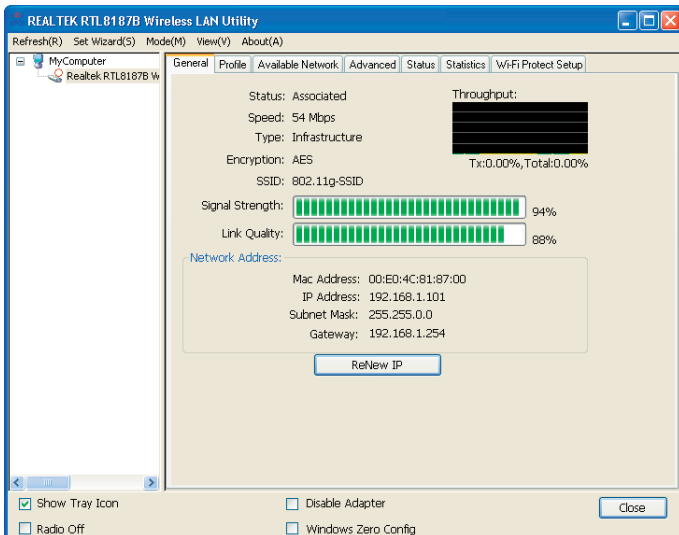
Step 2:

Click on "Push Button Config (PBC)" button.



Step 3:



Now you are ready to use the Wireless Network to Internet or intranet.

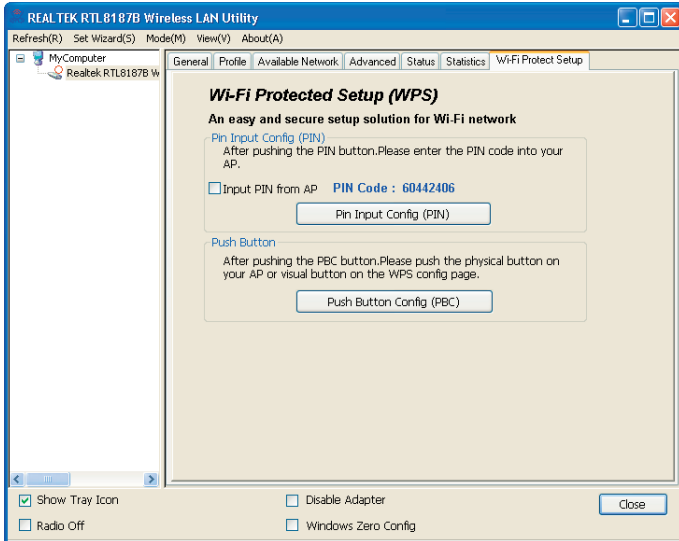


PIN Method 1

If users know AP's PIN code and the PIN code is 25306637, please follow steps below to complete the WPS.

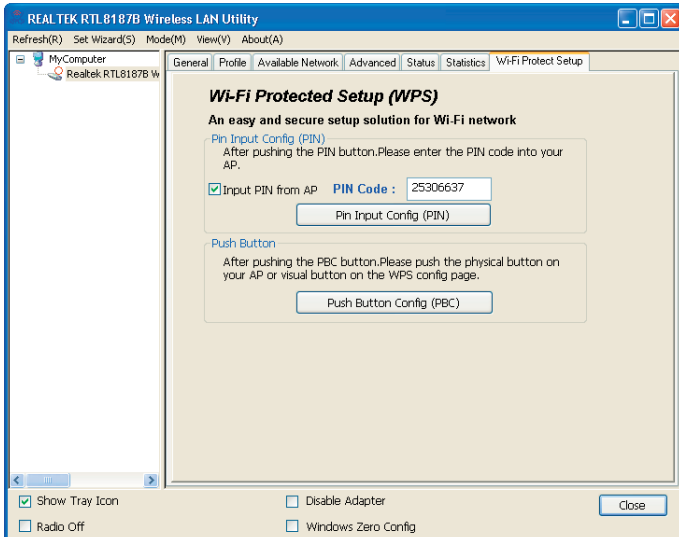
Step 1:

Double click the  icon on your desktop to start the utility or  in the task bar and then click the "Wi-Fi Protected Setup" tab.



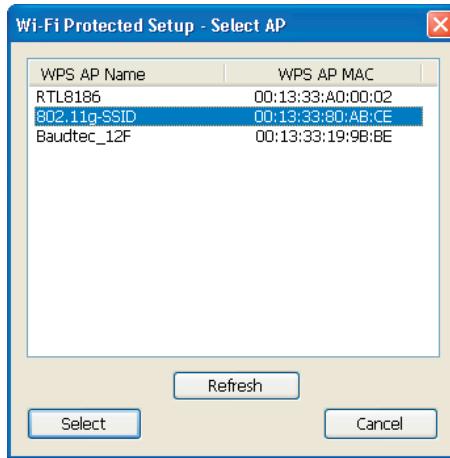
Step 2:

Check on the "Input PIN from AP" and enter the PIN code of AP 25306637 in the PIN Code field and then click on "Pin Input Config (PIN)" button.

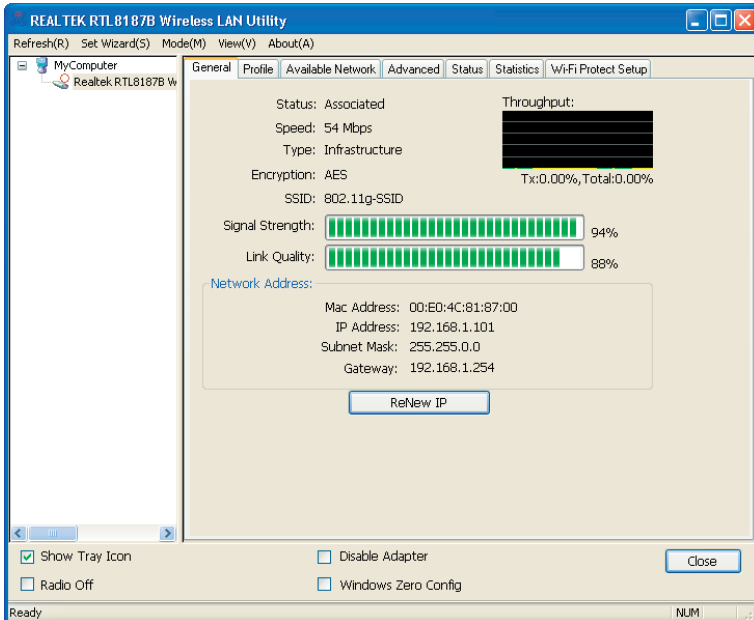


Step 3:

Select the desired WPS AP Name and then click on "Select" button.

**Step 4:**



Now you are ready to use the Wireless Network to Internet or intranet.

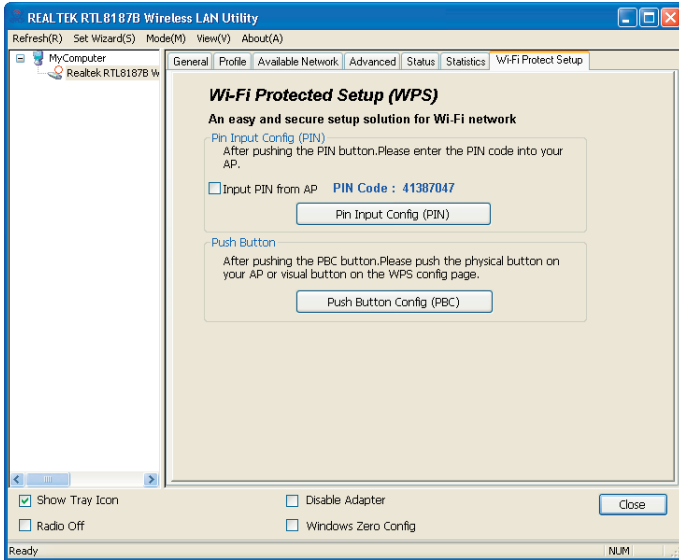


PIN Method 2

If AP know users' PIN code and the PIN code is 41387047, please follow steps below to complete the WPS.

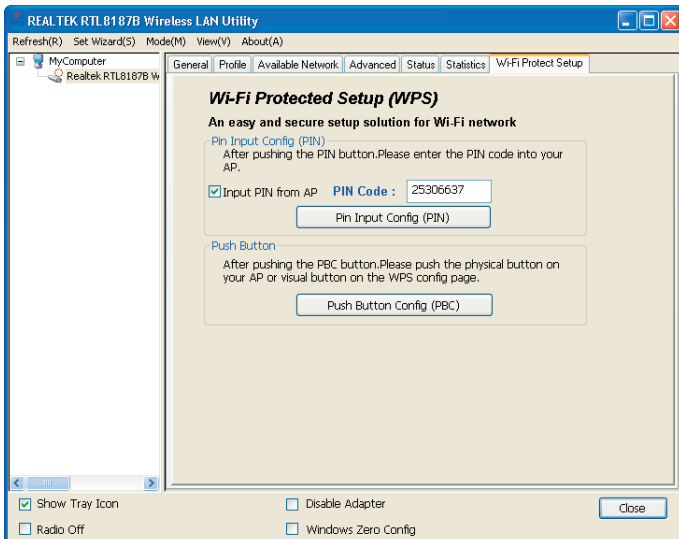
Step 1:

Double click the  icon on your desktop to start the utility or  in the task bar and then click the "Wi-Fi Protected Setup" tab.



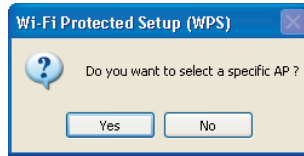
Step 2:

Click on "Pin Input Config (PIN)" button.

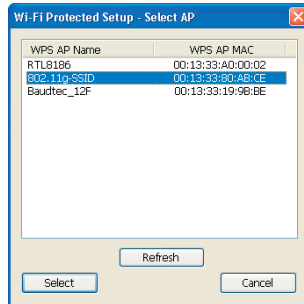


Step 3:

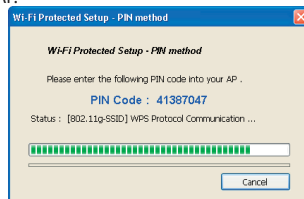
Click on "Yes" button.

**Step 4:**

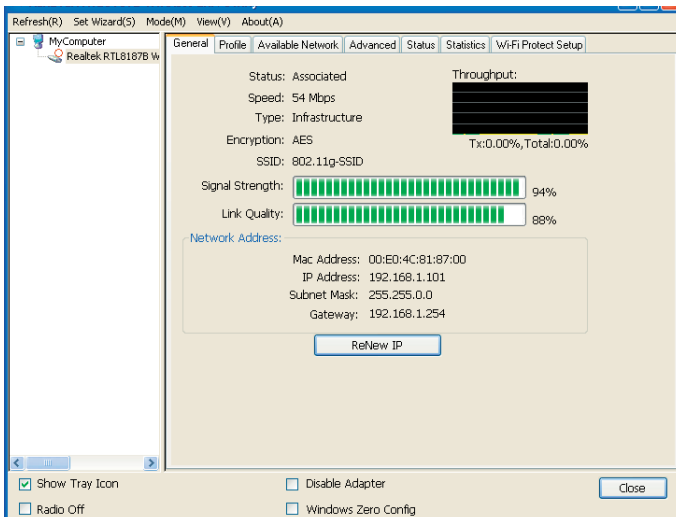
Select the desired WPS AP Name and then click on "Select" button.

**Step 5:**

Please enter the PIN Code into your AP.

**Step 6:**

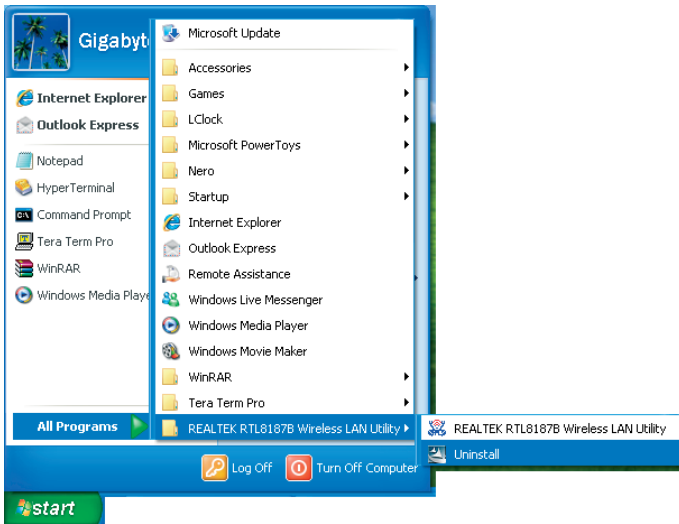
Now you are ready to use the Wireless Network to Internet or intranet.



Uninstall

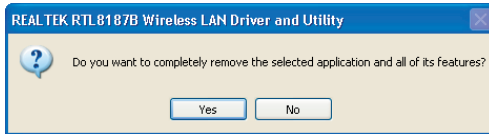
Step 1:

Click "Start" -> All Programs -> REALTEK RTL8187B Wireless LAN Utility -> Uninstall."



Step 2:

Click "Yes".



Step 3:

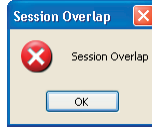
Click "Finish".



Troubleshooting

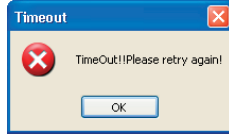
Session Overlap

If there is more than one AP on the PBC mode, there will be [Session Overlap]. Please use the PIN method or wait for a while and push the button again.



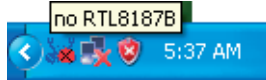
TimeOut!!

If you see the message below while doing WPS!! Please retry again!



NO RTL8187B

If you see the message below, please plug in the Realtek RTL8187B Wireless 802.11b/g 54Mbps USB 2.0 Network Adapter to the USB port of PC.



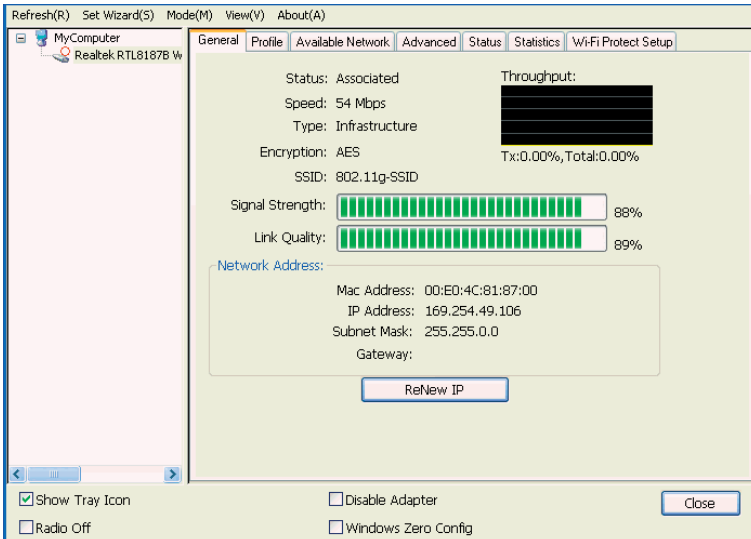
RTL8187B is Disconnected

If you see the message below, please refer to the chapter Making a Basic Wireless Network Connection to make a Wireless Network Connection.



Cannot get IP Address from Wireless AP

If the Wireless LAN Utility cannot get any the real IP Address from AP, please click on ReNew IP button to request IP Address again or configure the static IP Address for Realtek RTL8187B Wireless 802.11b/g 54Mbps USB 2.0 Network Adapter.



Environment protection:

This symbol on our product nameplates proves its compatibility with the EU Directive 2002/96 concerning proper disposal of waste electric and electronic equipment (WEEE). By using the appropriate disposal systems you prevent the potential negative consequences of wrong product take-back that can pose risks to the environment and human health. The symbol indicates that this product must not be disposed of with your other waste. You must hand it over to a designated collection point for the recycling of electrical and electronic equipment waste. The disposal of the product should obey all the specific Community waste management legislations. Contact your local city office, your waste disposal service or the place of purchase for more information on the collection. Weight of the device: 0,05 kg

MODECOM S.A.

00-124 Warszawa, Rondo ONZ 1.

www.modecom.eu

MODECOM