

# MODECOM VOLCANO SHINOBI

VOLCANO

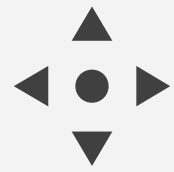
VOLCANO

Lightweight.

Sensor Pixart® PMW-3327.

Honeycomb design.





**SENSOR**

High-quality Pixart® PMW-3327 sensor for high precision in games.



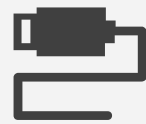
**SWITCHES**

Huano switches with extremely long life and reliability.



**HONEYCOMB DESIGN**

Honeycomb structure - light, durable and reducing palm sweating.



**CABLE**

180 cm long USB cable.



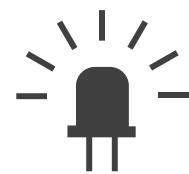
**ERGONOMY**

A very comfortable mouse that allows you to work for many hours. Thanks to the honeycomb structure, it reduces hand sweating.



**HIGH QUALITY**

The use of high-quality materials during production ensures its durability.



**LED RGB**

Effective RGB LED backlight.



**SOFTWARE**

Dedicated software to be downloaded from the manufacturer's website [www.modecom.com](http://www.modecom.com)



**LIGHTWEIGHT**

Low weight of the mouse - only 72 grams (without the cable).



**LED RGB**

Effective RGB LED backlight.

**HUANO SWITCHES**

High-quality switches with a long service life.

**CABLE**

A long, flexible cable in a material braided "lace" type.



**PERFECT PRECISION**

The Pixart® PMW-3327 sensor ensures high precision.

**HONEYCOMB STRUCTURE**

The honeycomb structure reduces the weight and palm sweating.

**HIGH QUALITY**

The high quality of the materials makes the mouse durable.



## TOP COMPONENTS

The mouse uses top components - the Pixart® PMW-3327 sensor and Huano switches.

## LIGHTWEIGHT

MODECOM Volcano Shinobi is a lightweight mouse with a honeycomb structure. Thanks to this, many hours of games at the computer will not tire your hands.

## LED RGB

Effective RGB LED backlight can be adjusted to your preferences. Choose the right color and enjoy a beautiful looking gaming stand.





The Pixart® PMW-3327 sensor is perfect for any kind of games.



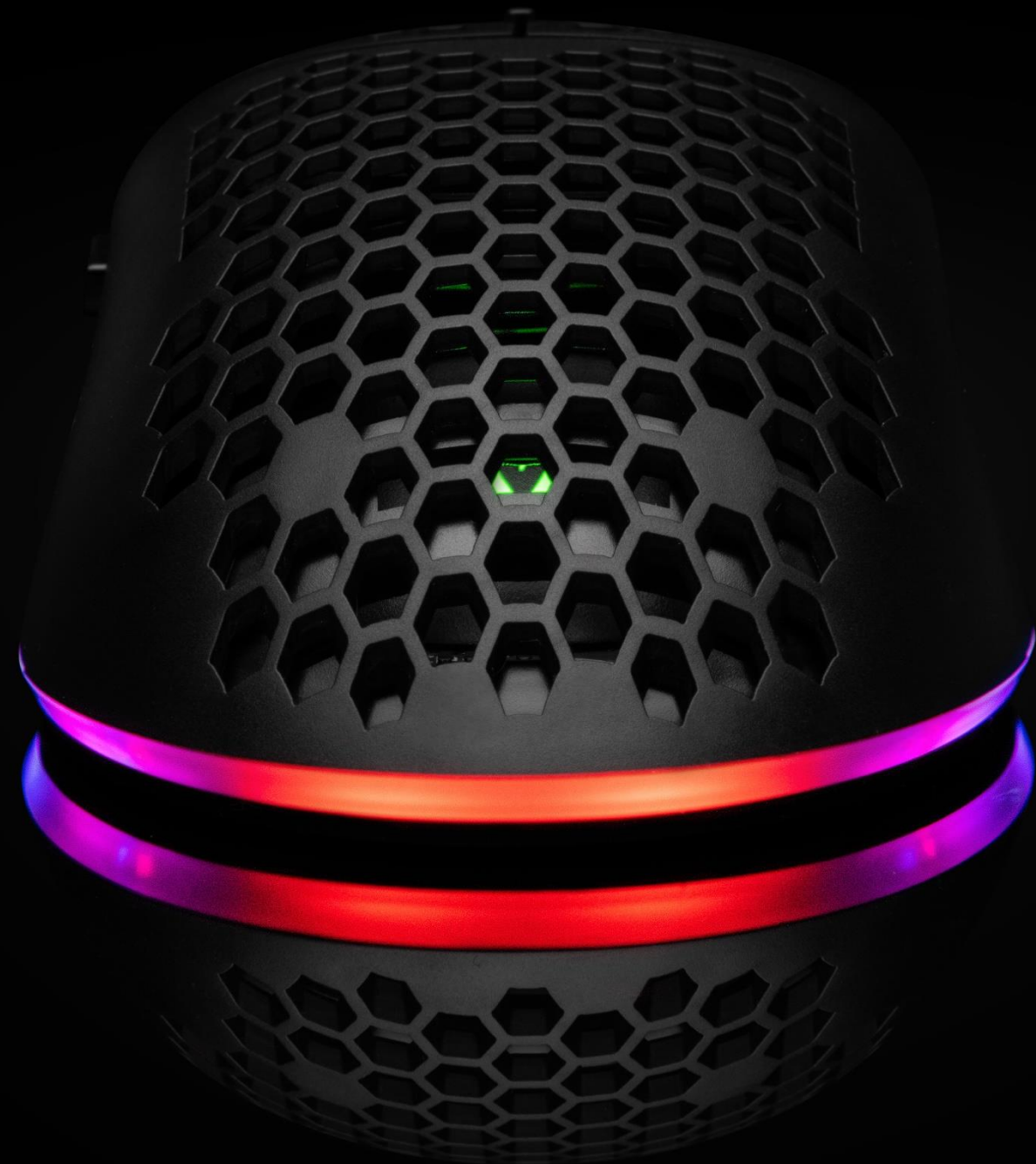
# VOLCANO SHINOBI

## TOP SOLUTIONS FOR EVEN BETTER GAMING

Computer game enthusiasts can play computer games for hours. It is for them that the Shinobi mouse was created, which thanks to its properties not only guarantees low weight, but also reduces palm sweating.

Using MODECOM Volcano Shinobi mice is pure pleasure - high-class components guarantee high precision needed in games that require quick response. The precise operation of the mouse allows you to gain an advantage during your favorite game.





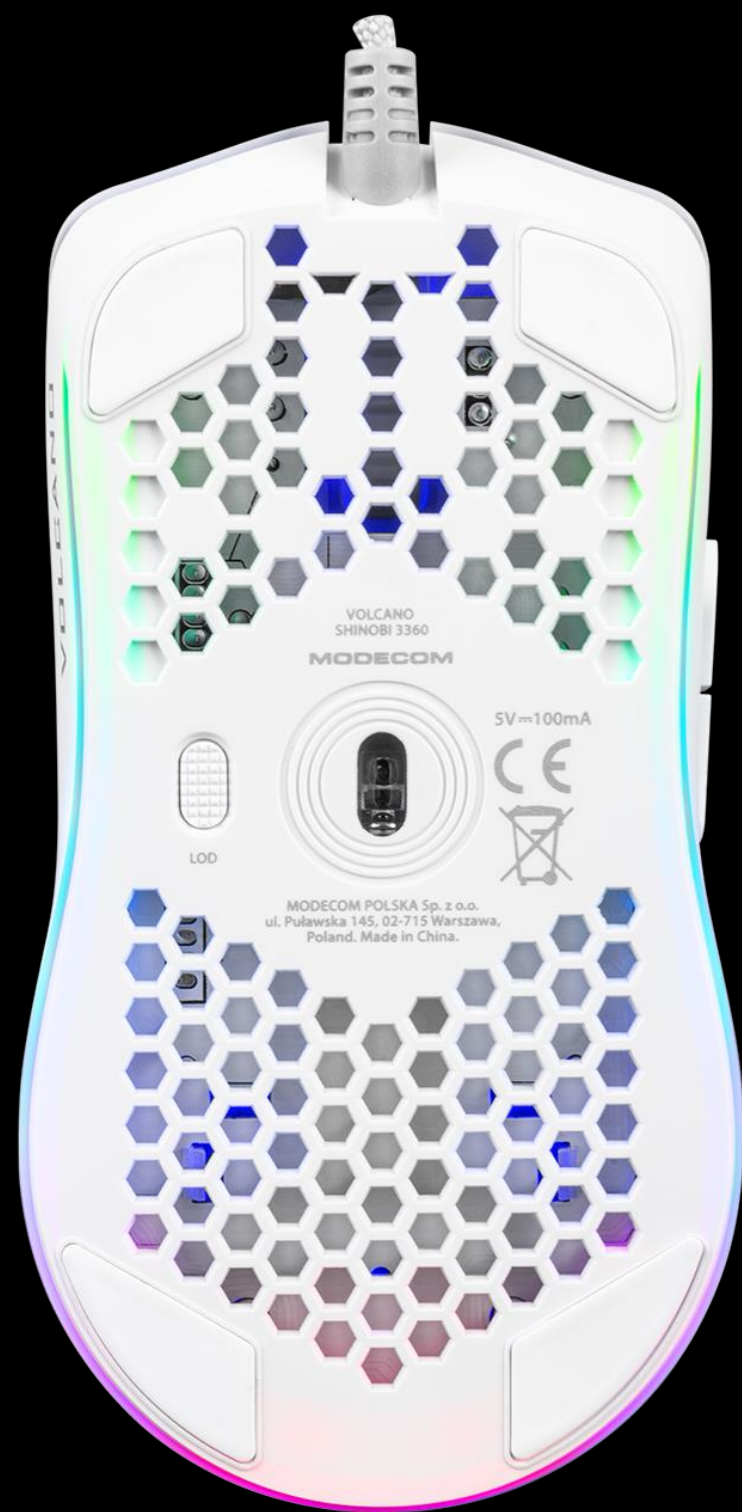
## DESIGN

The mouse is available in two color versions: white and black. Effective RGB LED backlight practically on the entire bottom edge, reflects the gaming character of the mouse. Additionally, the croll wheel and the Volcano logo inside were highlighted. The mouse proudly presents its origins, confirming its belonging to the family of players.

It is the optimal choice for computer game enthusiasts and will prove itself in both precise FPS games and RTS strategies or RPG games.







### **Mouse skates and L.O.D. button**

High-quality mouse skates ensure even smoother movements on the pad. There is also a L.O.D switch on the bottom of the mouse. (lift od distance), allowing you to change this parameter (sensor distance from the surface) to 2 or 3 millimeters.

# Meet MODECOM VOLCANO SHINOBI



Enter the world of gaming and forget about the reality that surrounds you. Use the latest technological solutions and have fun. Or just spend a nice and comfortable time while working or studying.

**It's your choice, we only gave you the tool.**

# 10 REASONS WHY YOU SHOULD HAVE IT

01. **HONEYCOMB  
DESIGN**

The honeycomb design reduces the weight of the device (it weighs 72 grams without the cable) and the palm sweating (the holes increase air circulation).

02. **PIXART 3327**

High-quality Pixart® PMW-3327 sensor for high precision in games.

03. **HUANO**

High-end Huano switches with a lifetime of 10 million clicks.

04. **LED RGB**

Effective RGB LED backlight.

05. **SOFTWARE**

The software can be downloaded from the manufacturer's website - [www.modecom.com](http://www.modecom.com)



# 10 REASONS WHY YOU SHOULD HAVE IT

## 06. CONVENIENCE

A comfortable mouse that allows you to play for many hours without feeling tired.

## 07. FOR YEARS

High-quality material will allow you to use it for years.

## 08. 6 SWITCHES

6 programmable buttons - adjust the mouse to your preferences.

## 09. MACROS

You can record macros in a way you prefer.

## 10. LONG CABLE

Long cable (180 cm) in a material braided "lace" type.



## CABLE

MODECOM VOLCANO SHINOBI is a wired gaming mouse.

A long, 180 cm long and lightweight cable in a material braid of the "shoelace" type, reduces the resistance to moving the mouse and ensures high comfort.

Thanks to this, working with the mouse is very pleasant, and the cable does not interfere even during intense gaming.





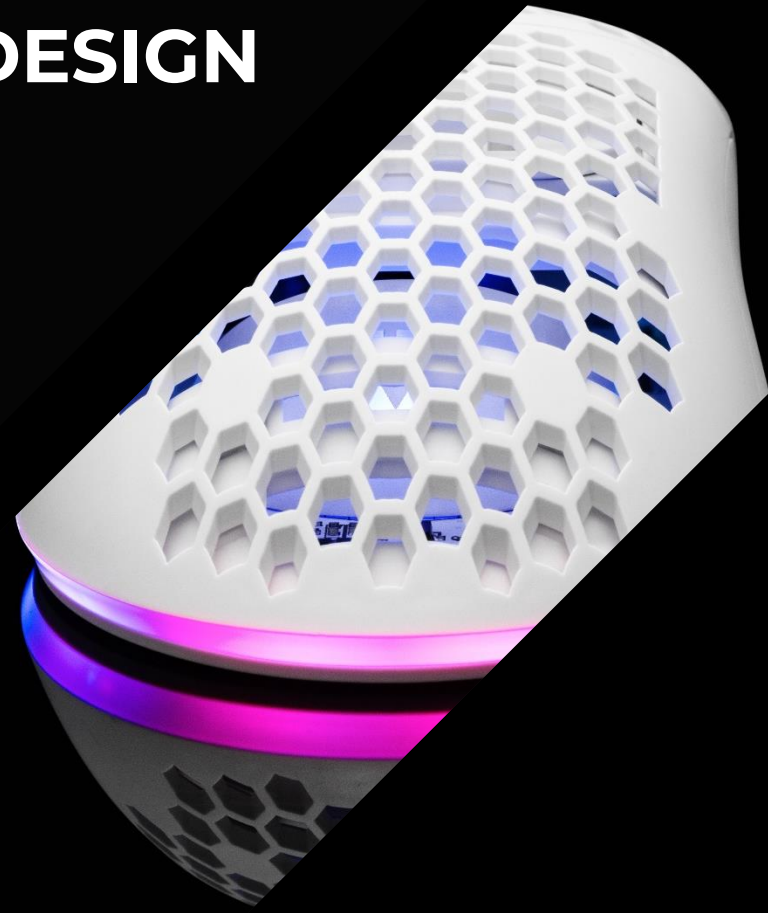
## Play the way you like thanks to the software

Configure the mouse and play freely - enjoy every minute at the computer games.

You can program each button freely, you can also set macros. You have a wide selection field, so your mouse will serve the way you like.



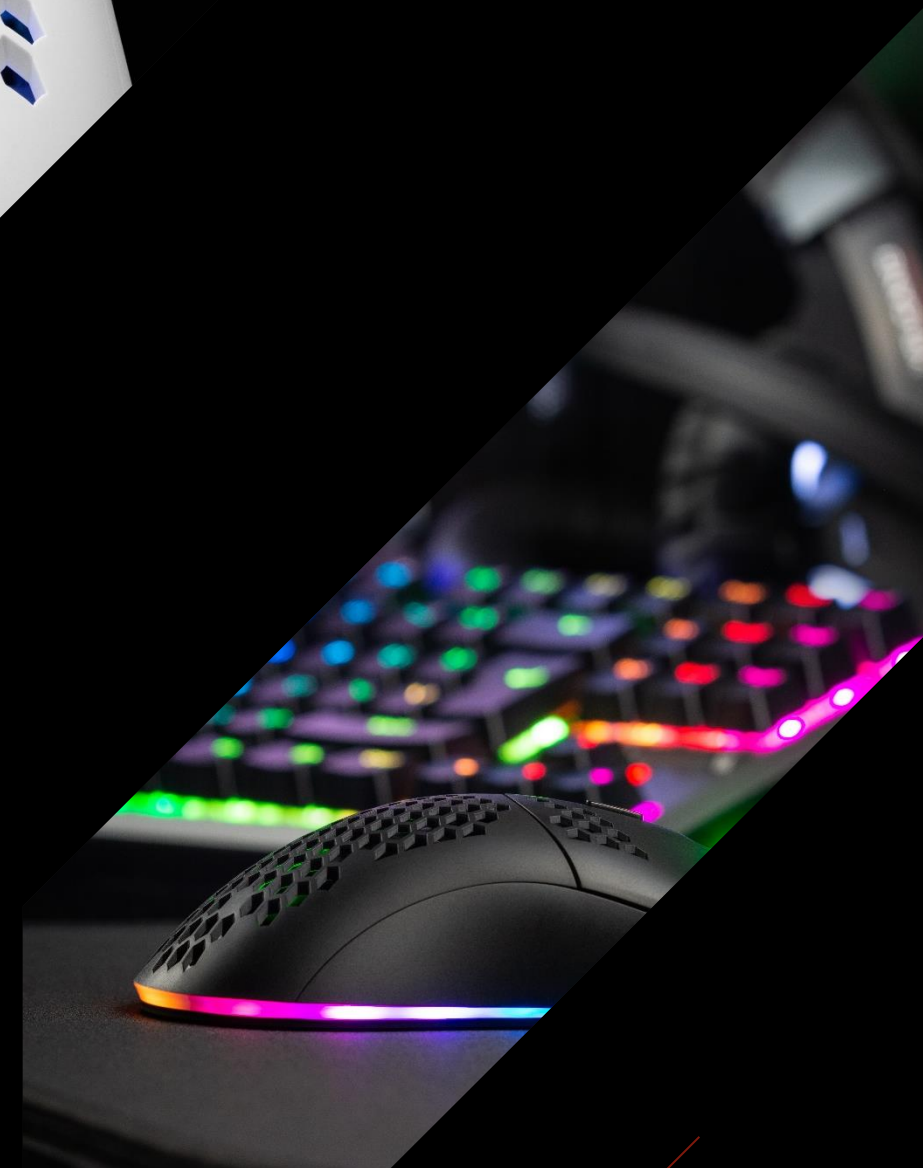
**MODERN  
DESIGN**



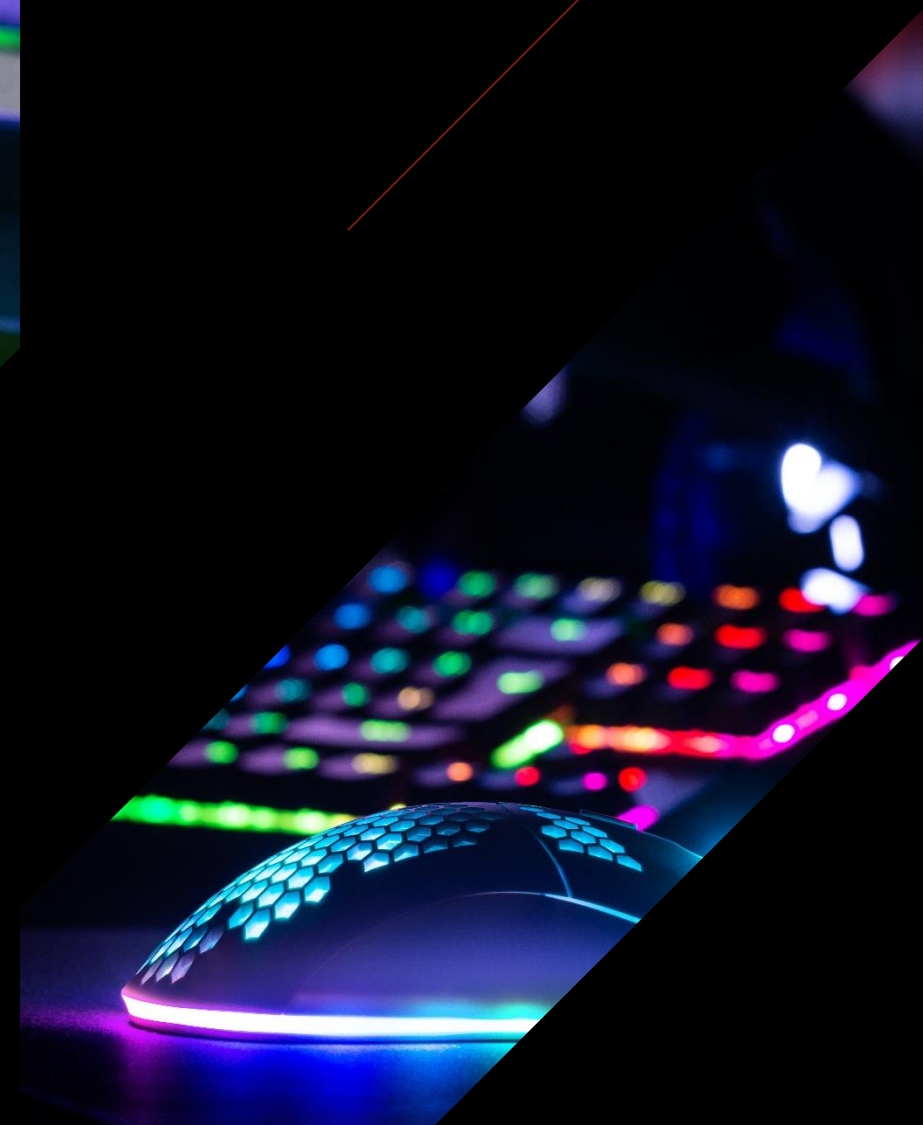
**LED RGB**



**HIGH QUALITY  
COMPONENTS**



**OPTIMAL  
SOLUTIONS FOR  
GAMERS**



# VOLCANO SHINOBI

Color

Black / White

Backlight

Full LED RGB  
(16,7 M colors)





## Model

## VOLCANO SHINOBI

|                                      |                         |
|--------------------------------------|-------------------------|
| Dimensions                           | 128.5 x 67 x 38 mm      |
| Chipset                              | Pixart® PMW-3327        |
| Sampling frequency                   | Up to 1000 Hz           |
| Driver with macro support            | Yes                     |
| Number of programmable buttons       | 6                       |
| Resolution                           | 12000 DPI               |
| Power supply                         | USB                     |
| Backlight                            | LED RGB                 |
| Number of LED colours to choose from | 16,7M                   |
| Weight                               | 72g                     |
| L.O.D. control                       | Yes, a dedicated button |

# LOGISTICS

01

EAN: 5901885240008 (white)

EAN: 5901885240060 (black)

02

Product code: M-MC-SHINOBI-3327-100 (black)

Product code: M-MC-SHINOBI-3327-200 (white)

03

Dimensions of the collective package: 46,5 x 36,5 x 35 cm

04

Number of pieces in the collective package: 20

