

VOLCANO SPACE APEX ARGB MIDI



Ready for motherboards with inverted ports.

Roomy design.

4 ARGB fans installed.

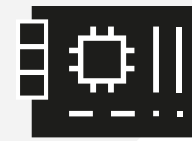
Panels made of tempered glass.





FANS

3 x 140 mm ARGB fans on the side panel and 1 x 140 mm ARGB on the back of the case. Fan speed controller included.



MOTHERBOARD

Ready for motherboards with inverted ports.



GLASS

Tempered glass on the side panel and on the front. The special design allows for the best possible exposure of the components.



GPU STAND

Graphics card stand included. Additionally, you will also find a screwdriver, a cleaning cloth and a screw box.



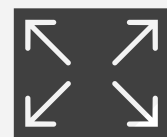
I/O

Possibility to change the location of the I/O panel (side or front).



NO SCREWS

All panels are mounted with snaps.



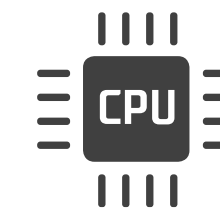
SPACIOUS

Great interior design possibilities.



QUALITY

The use of high-quality materials during production ensures its durability.



CPU COOLER

Possibility to install a processor cooler with a maximum height of 183mm.



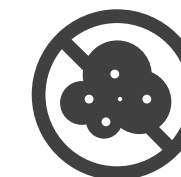
FUNCTIONAL

Functional interior for 3.5" HDD and 2.5" SSD hard drives.



GPU

Space for graphics cards up to 430 mm. Vertical card mounting possible.



DUST FILTERS

Dust protection filters.





YOUR COMPUTER WILL FEEL LIKE A FISH IN WATER HERE

You spend a lot of money on a processor, motherboard, graphics card and RAM and put it all in a computer case. Sometimes you look at your current PC case that hides all these components and wish you could see all the technological achievements that generate so much FPS in games.

The Volcano Space PC case has a special design in which the front and side panels are made of tempered glass. Thanks to this, its structure resembles an aquarium in which all installed components can be seen from virtually every angle. This is a case for those who love to look at their computer!

Moreover, in this unique design you can install a motherboard with inverted ports, and the computer assembly will be made more pleasant by ergonomic solutions such as the assembly and disassembly of panels with snaps. To personalize your personal computer as much as possible, we have made it possible to move the I/O panel from the side to the front, and we have also left a lot of space for optional water cooling and long graphics cards. Your computer will feel like a fish out of water here.



ARGB FANS

One 140 mm pre-installed ARGB fan.

MESH PANEL

Airy top panel for best air circulation.
Ready for water cooling.

ARGB FANS

Three 140 mm ARGB fans pre-installed.

POSSIBILITY OF VERTICAL INSTALLATION OF THE GRAPHICS CARD

Possibility to reverse the PCIe slot frame for vertical GPU mounting.

TEMPERED GLASS

Tempered glass front and side panel for best exposure of components.

PLACE FOR A GPU STAND OR A FAN

GPU stand included. Possibility to install a fan to improve air circulation.

PANEL I/O

I/O panel with USB ports that can be moved to the front.



READY FOR MOTHERBOARDS WITH INVERTED PORTS.

Ready to mount motherboards with non-standard socket / ports locations, i.e. where the ports have been moved from the front to the reverse of the motherboard.

RUBBER GROMMETS

Rubber grommets provide protection and facilitate component installation.

DRIVES

Installation of HDD and SSD drives.



VELCROS

Velcros ensure optimal organization of cables.

DISK TRAY

Space for one 2.5" SSD.

CONTROLLER ARGB

Controller for 9 ARGB fans.

PSU TUNNEL

Lots of space for the power supply.



MODERN SOLUTIONS FOR MODERN MOTHERBOARDS

INSTALLATION OF MOTHERBOARDS WITH INVERTED PORTS

This PC case is designed for motherboards with non-standard socket locations, i.e. where the ports have been moved from the front to the reverse of the motherboard.

However, nothing stops you from installing well-known and popular motherboard models. Here the choice is only yours. The Volcano Space allows the installation of classically constructed ATX boards, so you are not limited by the chassis design.



FIRST ORDER



Fully tested compatibility with the MSI Project Zero motherboard and ASUS B760M-BTF WIFI D4 confirms the modernity of the solutions for all users who value order in their computer. Leading out the connectors / ports on the reverse of the motherboard allows you to hide the cables and fully expose the gaming components.

Volcano Space sets standards of aesthetics and order at the highest level.



4 X 140 ARGB STARTER PACK

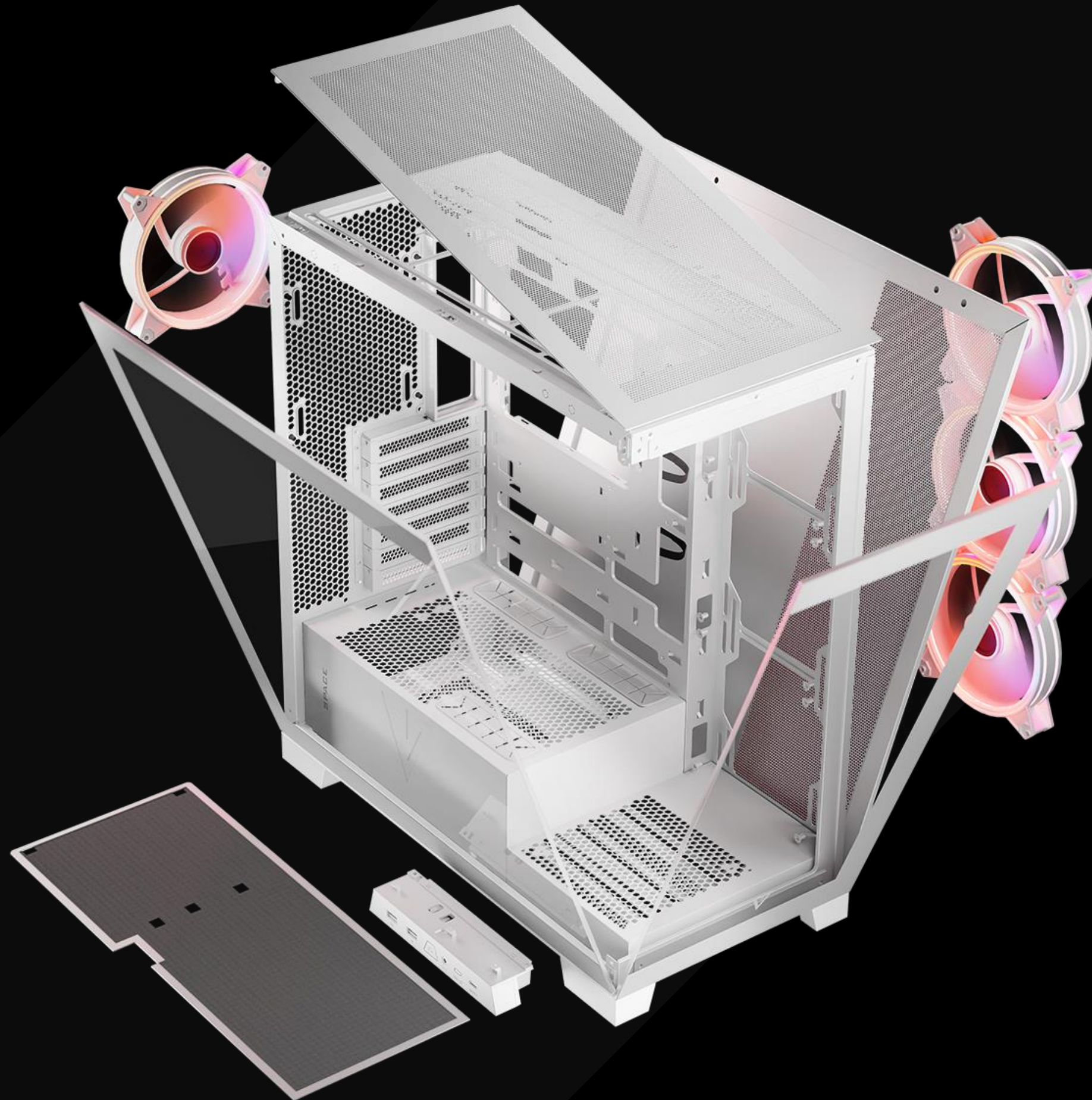


Keeping components running cool is important. Thanks to this, they work more efficiently and their service life increases.

Pre-installed ARGB fans (3 x 140 mm at the side and 1 x 140 mm at the back) ensure good airflow, effectively cooling the graphics card and processor.

However, if you want to have even greater configuration options, you can install three additional 120 mm or two 140 mm fans on the top panel.

Moreover, at the bottom of the case, right next to the front panel, you can install another 120 mm or 140 mm fan. All this for perfect performance!



NO SCREWS

EASY AND PLEASANT - EVERYTHING WITH SNAPS

The times when you had to unscrew panels are long gone. In the Volcano Space, we offer pleasant and simple solutions so that you can assemble your dream computer with a smile.

All panels are mounted with snaps - you do not need any tools to remove the panel and conveniently install the components.

Need to install additional RAM? Blow out the dust from the interior? You can remove the panels with a smooth movement of your hand without having to unscrew them.



Volcano Space is equipped with an ARGB fan controller mounted in the power supply tunnel. A total of 9 fans can be connected.

CONTROLLER



DO IT YOUR WAY



You can configure the panel with USB/Audio ports according to your wishes - it can be installed on the side or front of the PC case.

Thanks to this solution, you have even better options for arranging your computer.

On the panel you will find 2 USB 3.0 ports and one USB-C port. The microphone and headphone ports are located in the combo socket.

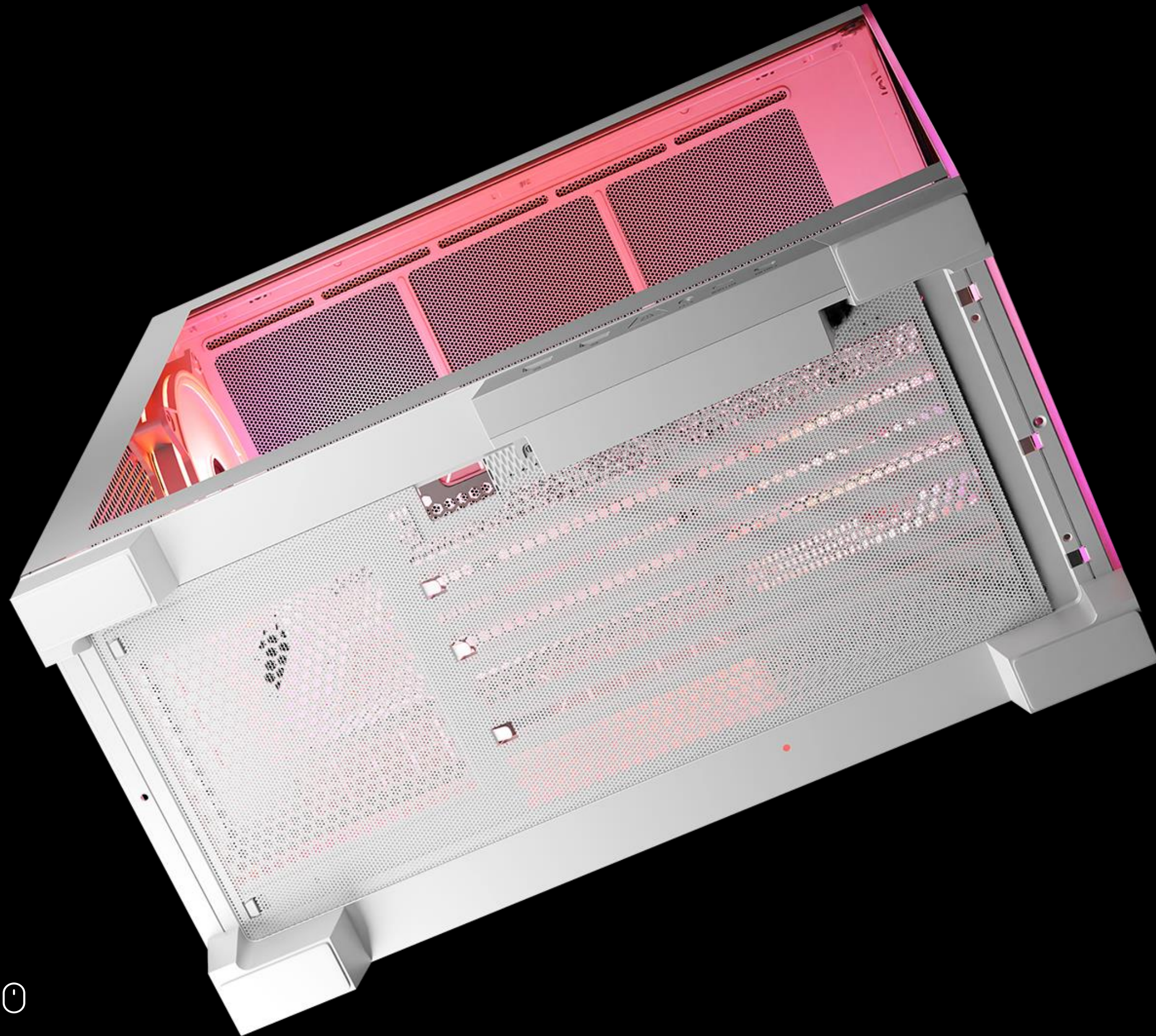


WATER COOLING

Volcano Space is ready for water cooling installation. At the top of the case there is space for radiators up to 360 mm. The same size cooler will also fit in place of the pre-installed fans on the side panel. At the back, you can install a 140 mm radiator.

The introduced solutions are aimed at creating a real gaming machine for every task. And all this in an interesting, modern design.





DUST FILTER

There is a dust filter under the power supply. You can easily remove and install the filter, which will keep your computer clean and at the same time increase the efficiency and safety of the power supply.

SPACE IN SPACE

There is plenty of space for your favorite games. This PC case allows you to install one 2.5" drive on the motherboard tray.

Additionally, you can install one 3.5" drive in the power supply tunnel and at least two 2.5" drives (vertically).

Due to its design, the Volcano Space mainly exposes the front of the motherboard, on which manufacturers are placing several M.2 sockets for NVME drives.



BEAUTY OF ARGB LED

This type of PC case simply needs RGB LED fans. And that's what you get as standard - there are four of them, all 140 mm ARGB.

The glassed front and side panel displays the installed components in the best possible way. You can highlight your components with a selected color or set the backlight to rainbow effect.

This is a case for those who like to watch and show gaming components of their personal computer.



RUBBER GROMMETS AND VELCRO CABLE ORGANIZERS



As befits the design of the PC case for gaming computers, there are rubber grommets inside on the power supply tunnel. Their purpose is to protect the cables against damage - especially the graphics card power cable. There are also Velcro cable organizers on the back of the motherboard tray to organize the inside of the computer in the best possible way.

SOFT MATERIAL CLOTH, SCREWDRIVER AND GPU STAND

We took care of all the details - we know that when assembling a computer, you just want to have everything you need at hand. Therefore, when you open the box with the PC case, you will find a soft cloth with which you can clean the glass panels. Additionally, the set includes a screwdriver and a stand for the GPU. Moreover all screws are packed in a dedicated box.





ADDITIONAL COOLING? HERE YOU GO!

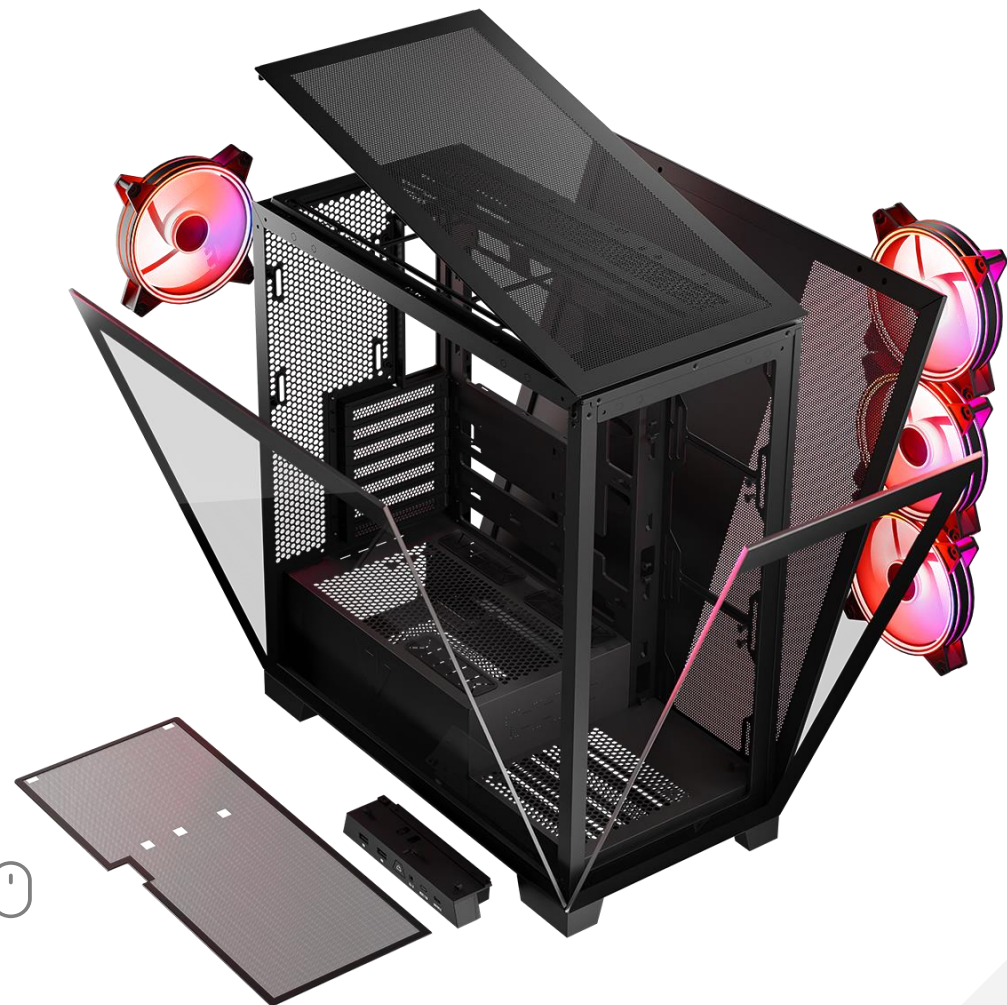
There is, of course, mounting space for additional fans on the top panel. If you so wish, you can easily install additional fans in a 3 x 120 mm or 2 x 140 mm configuration. But that's not all, because at the height of the PSU tunnel there is still room for one additional 120 mm or 140 mm fan.

All this to maintain the lowest possible temperatures and thus ensure comfort during many hours of intense and "hot" computer sessions.



AIRFLOW

Small ventilation holes in the top panel and on the side panel ensure good air circulation. Optimal airflow while providing protection against dust is ensured here.





REMOVABLE PCIe COVERS AND VERTICAL GPU MOUNTING

All PCI/PCIe expansion slot card covers are removable. Gamers will also appreciate the possibility of vertically mounting the graphics card, because the metal frame in which the slot covers are placed can be unscrewed.



ELEGANT BLACK



MODERN WHITE



10 REASONS WHY YOU SHOULD BUY IT

01. **ARGB**

The ARGB function allows you to freely illuminate your gaming computer.

02. **FANS**

Four pre-installed 140 mm fans. Additional fans mounting place. Ready for water cooling.

03. **INVERTED CONNECTORS**

Ready for motherboards with inverted connectors.

04. **VERTICAL GPU MOUNTING**

Vertical installation of the graphics card is possible.

05. **RUBBER CABLE GROMMETS**

Inside, rubber grommets are used for the cable entry holes on the PSU tunnel. Their purpose is to protect the cables against damage.



10 REASONS WHY YOU SHOULD BUY IT

06. DRIVES

A 2.5" drive can be mounted on the back of the motherboard tray, while space for additional 2.5" and 3.5" drives is provided in the power supply tunnel. This gives a lot of freedom in interior design.

07. TUNNEL

The power supply tunnel separates the PSU from other components. This solution ensures a lower temperature inside computer and has a positive effect on the aesthetics.

08. SIDE PANELS

Side and front panel made of tempered glass. Mounted without screws - with snaps. Easy, simple and pleasant.

09. FILTERS

Dust filters to keep the interior as tidy and clean as possible.

10. DESIGN

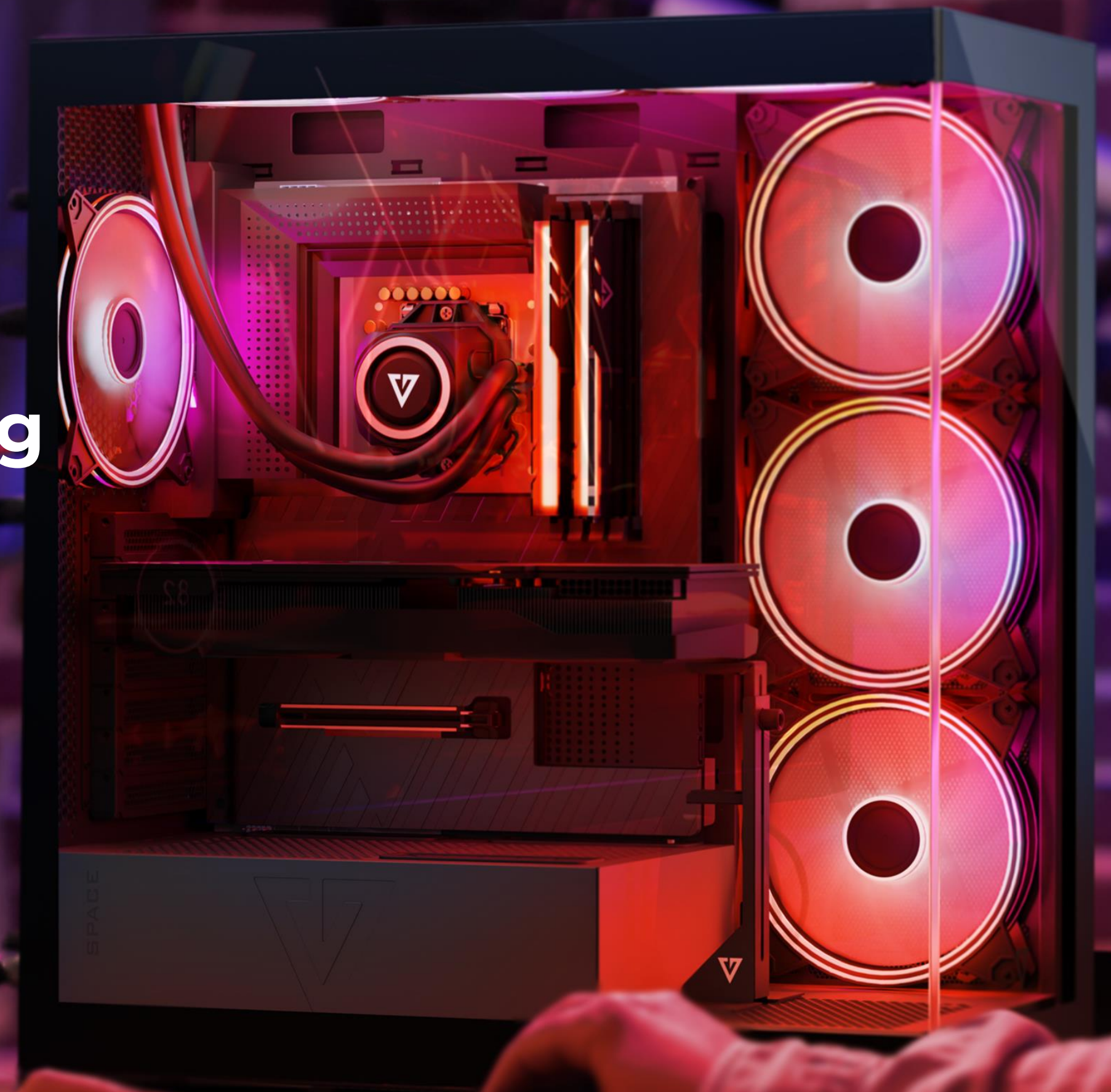
This is a case for all those who want to admire the inside of their computer.



Huge possibilities

Effective solutions

From the pleasure of gaming



WHO SHOULD CHOOSE VOLCANO SPACE?

Two tempered glass panels, four pre-installed 140 mm ARGB fans, fan controller, GPU support, extensive computer arrangement possibilities - this is a case for every lover of gaming sets.

THIS IS WHERE IT STARTED



Volcano Amirani ARGB case – this is where the real gaming of the Volcano case series began. Appreciated not only by specialist editorial offices, but above all by users.

FINALLY WITHOUT CABLES



Volcano Space is a must-have for all fans of gaming designs.



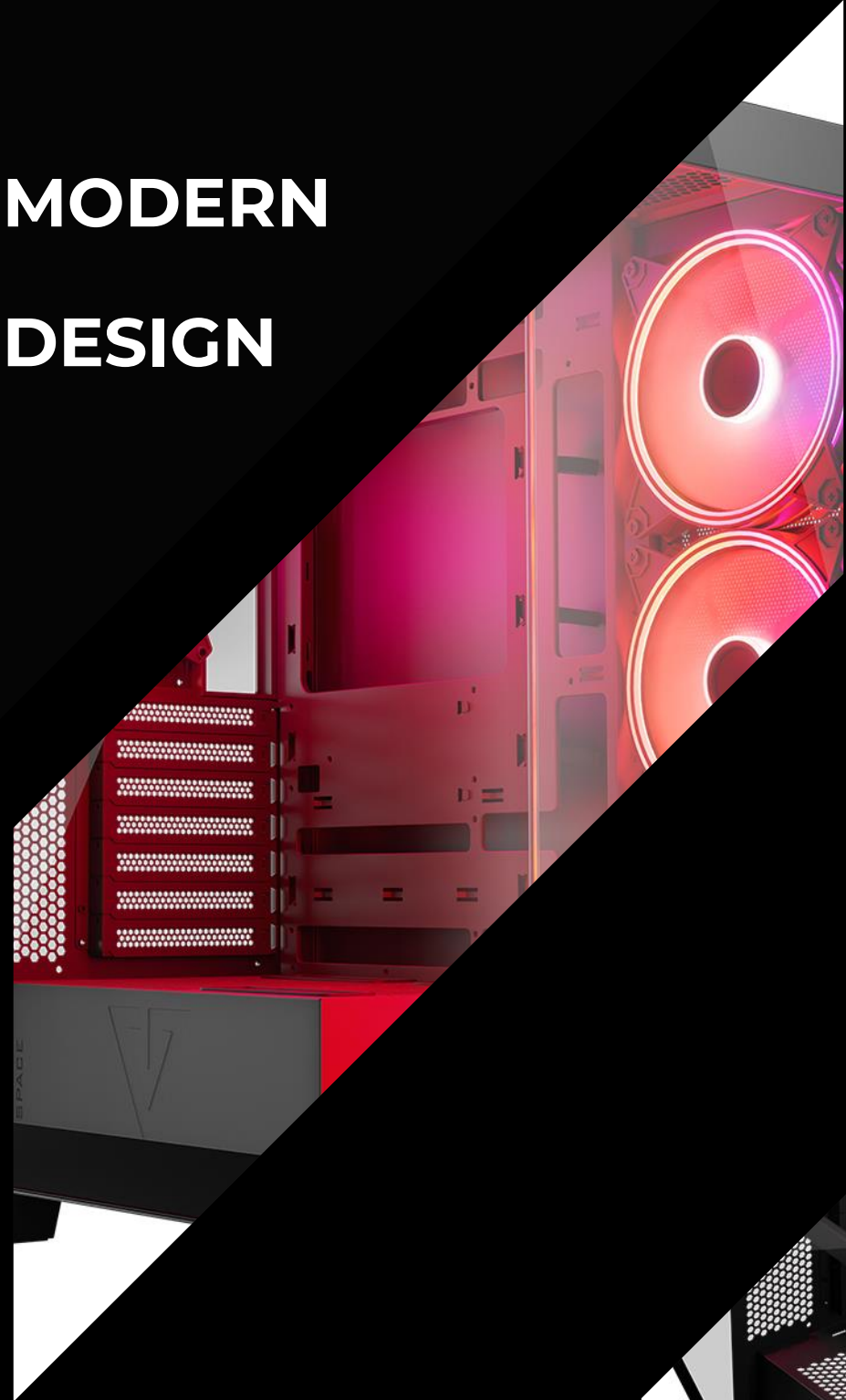
TRANSPORT BRACKET

During transport, a metal transport bracket is mounted on the front of the PC case to strengthen the structure.

To take advantage of the full functionality of the case, we suggest disassembling the bracket after removing it from the box.



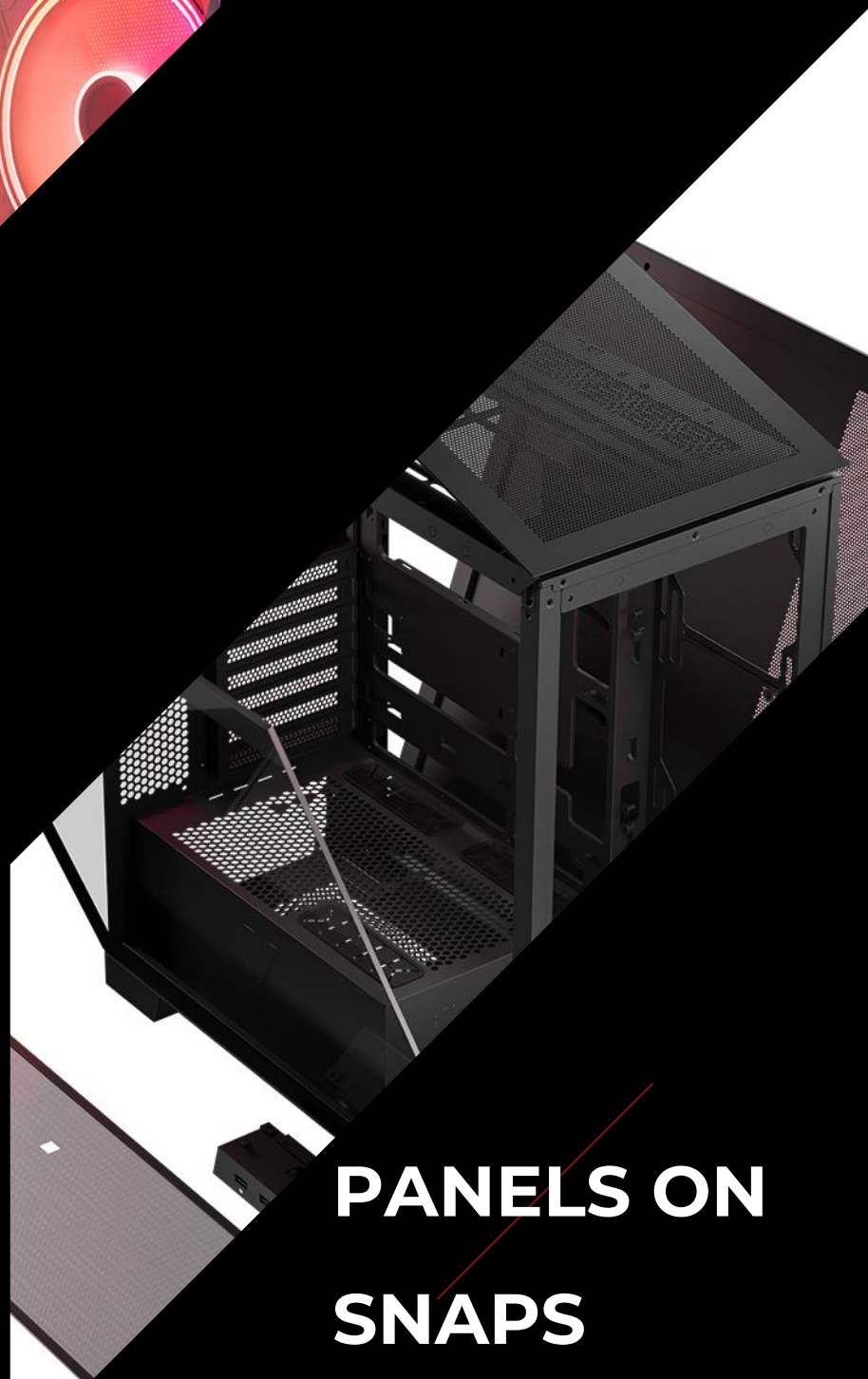
**MODERN
DESIGN**



**READY FOR
MOTHERBOARDS WITH
INVERTED CONNECTORS**



**PANELS ON
SNAPS**



**4 FANS 140 MM
ARGB PRE-
INSTALLED**





Model **VOLCANO SPACE APEX ARGB MIDI**

PC case	Midi tower
Purpose	Gamers
Dimensions:	461*235*505 mm (L*W*H)
Motherboard size	ATX/ Micro ATX/ ITX
Panel I/O ports	
• USB 3.0	2
• USB Type C	1
• Microphone input	Yes
• Headphones input	Yes / HD AUDIO combo
Drives mounting locations	
• Max inner 3,5"	1 (in PSU tunnel)
• Max inner 2,5"	3 (one in the motherboard tray, two in the power supply tunnel)
Color	White / Black
Tool-free assembly/disassembly of panels	Yes



Model

VOLCANO SPACE APEX ARGB MIDI

Number of fans installed

- Side panel 3 x 140 mm ARGB
- Rear panel 1 x 140 mm ARGB

Max number of fans

- Top panel 3 x 120 mm / 2 x 140 mm
- Tunnel PSU 1 x 120 mm / 1 x 140 mm

Fan controller

YES. Possibility to connect 9 fans.

PCIe expansion slot covers

7

PSU mounting place

PSU tunnel on the bottom of PC case

PSU tunnel

Yes. Maximum length of the power supply with disks installed: 186 mm

Max CPU cooler

183 mm

Max GPU

430 mm

Additional information

- Ready for a water cooling system
 - Top: 120mm/240mm/280mm/360mm
 - Rear: 120/140mm
 - Motherboard tray: 120mm/240mm/280mm/360mm
- Dust filter under PSU Yes
- Steel thickness 0,8 mm
- Net weight 11,6 kg

Logistics

VOLCANO SPACE APEX ARGB MIDI



Black PC case EAN: 5903560981282
Product code: AT-SPACE-PG-10-000000-0002

Dimensions of individual packaging: 588 x 325 x 548 mm
Weight brutto: 13,05 kg

White PC case EAN: 5903560981305
Product code: AT-SPACE-PG-20-000000-0002

